

SMYD3 Rabbit mAb

Catalog # AP76099

Product Information

Application	WB, IHC-P, IHC-F, IP, ICC
Primary Accession	Q9H7B4
Reactivity	Human
Host	Rabbit
Clonality	Monoclonal Antibody
Calculated MW	49097

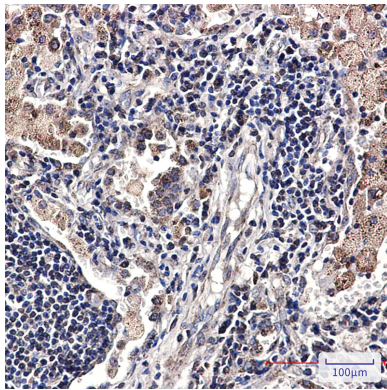
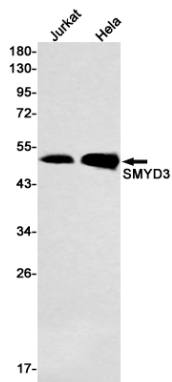
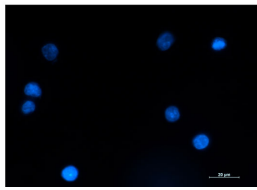
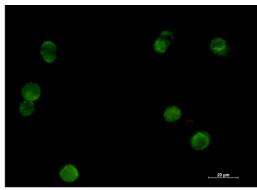
Additional Information

Gene ID	64754
Other Names	SMYD3
Dilution	WB~~1/500-1/1000 IHC-P~~N/A IHC-F~~N/A IP~~N/A ICC~~N/A
Format	50mM Tris-Glycine(pH 7.4), 0.15M NaCl, 40%Glycerol, 0.01% sodium azide and 0.05% BSA.
Storage	Store at 4°C short term. Aliquot and store at -20°C long term. Avoid freeze/thaw cycles.

Protein Information

Name	SMYD3
Synonyms	ZMYND1, ZNFN3A1
Function	Histone methyltransferase. Specifically methylates 'Lys-4' of histone H3, inducing di- and tri-methylation, but not monomethylation (PubMed: 15235609 , PubMed: 22419068). Also methylates 'Lys-5' of histone H4 (PubMed: 22419068). Plays an important role in transcriptional activation as a member of an RNA polymerase complex (PubMed: 15235609). Binds DNA containing 5'-CCCTCC-3' or 5'-GAGGGG-3' sequences (PubMed: 15235609).
Cellular Location	Cytoplasm. Nucleus. Note=Mainly cytoplasmic when cells are arrested at G0/G1. Accumulates in the nucleus at S phase and G2/M.
Tissue Location	Expressed in skeletal muscles and testis. Overexpressed in a majority of colorectal and hepatocellular carcinomas.

Images



Please note: All products are 'FOR RESEARCH USE ONLY. NOT FOR USE IN DIAGNOSTIC OR THERAPEUTIC PROCEDURES'.