

SNAP29 Rabbit mAb

Catalog # AP76101

Product Information

Application	WB, IP, ICC
Primary Accession	O95721
Reactivity	Human, Mouse, Rat
Host	Rabbit
Clonality	Monoclonal Antibody
Calculated MW	28970

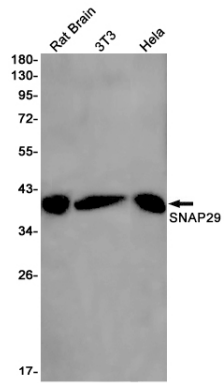
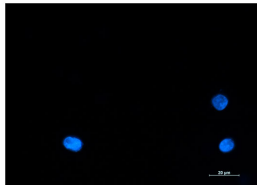
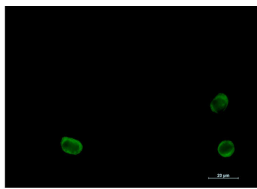
Additional Information

Gene ID	9342
Other Names	SNAP29
Dilution	WB~~1/500-1/1000 IP~~N/A ICC~~N/A
Format	Liquid

Protein Information

Name	SNAP29 (HGNC:11133)
Function	SNAREs, soluble N-ethylmaleimide-sensitive factor-attachment protein receptors, are essential proteins for fusion of cellular membranes. SNAREs localized on opposing membranes assemble to form a trans-SNARE complex, an extended, parallel four alpha-helical bundle that drives membrane fusion. SNAP29 is a SNARE involved in autophagy through the direct control of autophagosome membrane fusion with the lysosome membrane. Also plays a role in ciliogenesis by regulating membrane fusions.
Cellular Location	Cytoplasm. Golgi apparatus membrane {ECO:0000250 UniProtKB:Q9Z2P6}; Peripheral membrane protein. Cytoplasmic vesicle, autophagosome membrane; Peripheral membrane protein. Cell projection, cilium membrane; Peripheral membrane protein. Note=Appears to be mostly membrane-bound, probably via interaction with syntaxins, but a significant portion is cytoplasmic Localizes to the ciliary pocket from where the cilium protrudes
Tissue Location	Found in brain, heart, kidney, liver, lung, placenta, skeletal muscle, spleen and pancreas

Images



Please note: All products are 'FOR RESEARCH USE ONLY. NOT FOR USE IN DIAGNOSTIC OR THERAPEUTIC PROCEDURES'.