

Somatostatin Receptor 3 Rabbit mAb

Catalog # AP76108

Product Information

Application	WB
Primary Accession	P32745
Reactivity	Human
Host	Rabbit
Clonality	Monoclonal Antibody
Calculated MW	45847

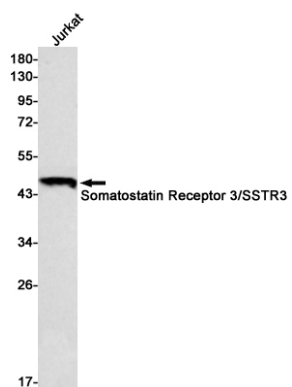
Additional Information

Gene ID	6753
Other Names	SSTR3
Dilution	WB~~1/500-1/1000
Format	50mM Tris-Glycine(pH 7.4), 0.15M NaCl, 40%Glycerol, 0.01% sodium azide and 0.05% BSA.
Storage	Store at 4°C short term. Aliquot and store at -20°C long term. Avoid freeze/thaw cycles.

Protein Information

Name	SSTR3
Function	Receptor for somatostatin-14 and -28. This receptor is coupled via pertussis toxin sensitive G proteins to inhibition of adenylyl cyclase.
Cellular Location	Cell membrane; Multi-pass membrane protein. Note=Internalized into endoplasmic vesicles upon somatostatin-stimulation.
Tissue Location	Brain, pituitary and pancreas.

Images



Please note: All products are 'FOR RESEARCH USE ONLY. NOT FOR USE IN DIAGNOSTIC OR THERAPEUTIC PROCEDURES'.