

SUN1 Rabbit mAb

Catalog # AP76134

Product Information

Application	WB, IHC-P
Primary Accession	O94901
Reactivity	Human
Host	Rabbit
Clonality	Monoclonal Antibody
Isotype	IgG
Conjugate	Unconjugated
Purification	Affinity Purified
Calculated MW	87110

Additional Information

Gene ID	23353
Other Names	SUN1
Dilution	WB~~1:1000-1:5000 IHC-P~~N/A
Format	Liquid in 50mM Tris-Glycine(pH 7.4), 0.15M NaCl, 40%Glycerol, 0.01% sodium azide and 0.05% BSA.
Storage	Store at 4°C short term. Aliquot and store at -20°C long term. Avoid freeze/thaw cycles.

Protein Information

Name	SUN1 (HGNC:18587)
Synonyms	KIAA0810, UNC84A
Function	As a component of the LINC (LInker of Nucleoskeleton and Cytoskeleton) complex involved in the connection between the nuclear lamina and the cytoskeleton (PubMed: 18039933 , PubMed: 18396275). The nucleocytoplasmic interactions established by the LINC complex play an important role in the transmission of mechanical forces across the nuclear envelope and in nuclear movement and positioning (By similarity). Required for interkinetic nuclear migration (INM) and essential for nucleokinesis and centrosome-nucleus coupling during radial neuronal migration in the cerebral cortex and during glial migration (By similarity). Involved in telomere attachment to nuclear envelope in the prophase of meiosis implicating a SUN1/2;KASH5 LINC complex in which SUN1 and SUN2 seem to act at least partial redundantly (By similarity). Required for gametogenesis and involved in selective gene expression of coding and non-coding RNAs needed for gametogenesis (By

similarity). Helps to define the distribution of nuclear pore complexes (NPCs) (By similarity). Required for efficient localization of SYNE4 in the nuclear envelope (By similarity). May be involved in nuclear remodeling during sperm head formation in spermatogenesis (By similarity). May play a role in DNA repair by suppressing non-homologous end joining repair to facilitate the repair of DNA cross-links (PubMed:[24375709](https://pubmed.ncbi.nlm.nih.gov/24375709/)).

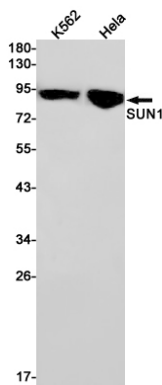
Cellular Location

Nucleus inner membrane; Single-pass type II membrane protein. Note=At oocyte MI stage localized around the spindle, at MII stage localized to the spindle poles {ECO:0000250 | UniProtKB:Q9D666}

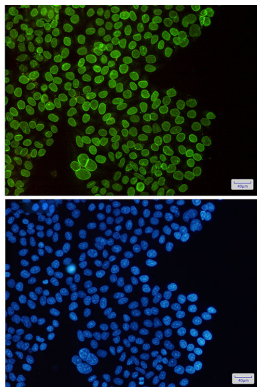
Background

Component of SUN-protein-containing multivariate complexes also called LINC complexes which link the nucleoskeleton and cytoskeleton by providing versatile outer nuclear membrane attachment sites for cytoskeletal filaments.

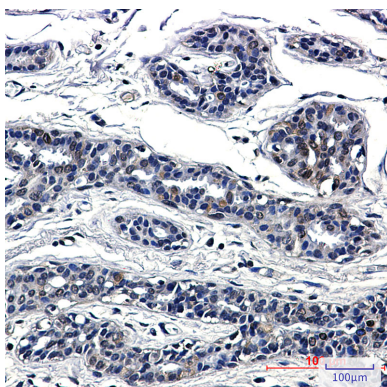
Images



Western blot analysis of SUN1 in K562, HeLa lysates using SUN1 antibody.



Immunocytochemistry analysis of SUN1(green) in HeLa using SUN1 antibody, and DAPI(blue)



Immunohistochemistry analysis of paraffin-embedded Human breast cancer using SUN1 antibody. High-pressure and temperature Sodium Citrate pH 6.0 was used for antigen retrieval.

Please note: All products are 'FOR RESEARCH USE ONLY. NOT FOR USE IN DIAGNOSTIC OR THERAPEUTIC PROCEDURES'.