

Superoxide Dismutase 1 Rabbit mAb

Catalog # AP76136

Product Information

Application	WB, IHC-P
Primary Accession	P00441
Reactivity	Human, Mouse, Rat
Host	Rabbit
Clonality	Monoclonal Antibody
Calculated MW	15936

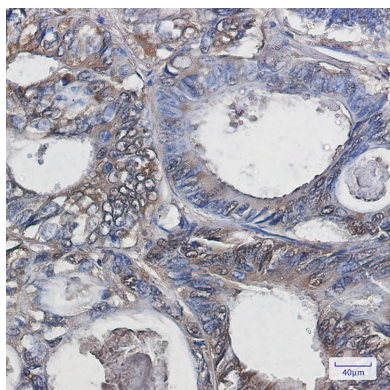
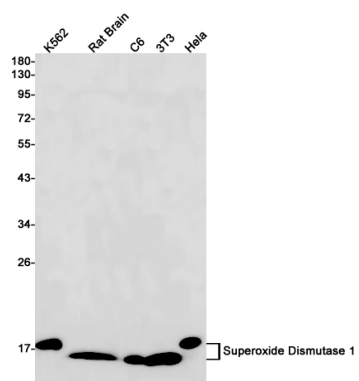
Additional Information

Gene ID	6647
Other Names	SOD1
Dilution	WB~~1/500-1/1000 IHC-P~~N/A
Format	50mM Tris-Glycine(pH 7.4), 0.15M NaCl, 40%Glycerol, 0.01% sodium azide and 0.05% BSA.

Protein Information

Name	SOD1 (HGNC:11179)
Function	Destroys radicals which are normally produced within the cells and which are toxic to biological systems.
Cellular Location	Cytoplasm. Nucleus. Note=Predominantly cytoplasmic; the pathogenic variants ALS1 Arg-86 and Ala-94 gradually aggregates and accumulates in mitochondria.

Images



Please note: All products are 'FOR RESEARCH USE ONLY. NOT FOR USE IN DIAGNOSTIC OR THERAPEUTIC PROCEDURES'.