

Syntaxin 4 Rabbit mAb

Catalog # AP76142

Product Information

Application	WB
Primary Accession	Q12846
Reactivity	Human, Mouse, Rat
Host	Rabbit
Clonality	Monoclonal Antibody
Calculated MW	34180

Additional Information

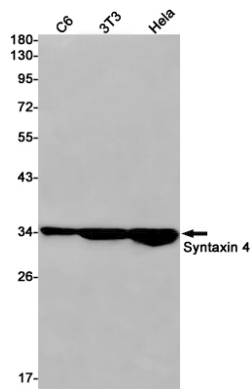
Gene ID	6810
Other Names	STX4
Dilution	WB~~1/500-1/1000
Format	50mM Tris-Glycine(pH 7.4), 0.15M NaCl, 40%Glycerol, 0.01% sodium azide and 0.05% BSA.

Protein Information

Name	STX4
Synonyms	STX4A
Function	<p>Plasma membrane t-SNARE that mediates docking of transport vesicles (By similarity). Necessary for the translocation of SLC2A4 from intracellular vesicles to the plasma membrane (By similarity). In neurons, recruited at neurite tips to membrane domains rich in the phospholipid 1-oleoyl-2-palmitoyl-PC (OPPC) which promotes neurite tip surface expression of the dopamine transporter SLC6A3/DAT by facilitating fusion of SLC6A3-containing transport vesicles with the plasma membrane (By similarity). Together with STXB3 and VAMP2, may also play a role in docking/fusion of intracellular GLUT4-containing vesicles with the cell surface in adipocytes and in docking of synaptic vesicles at presynaptic active zones (By similarity). Required for normal hearing (PubMed:36355422).</p>
Cellular Location	<p>Cell membrane {ECO:0000250 UniProtKB:Q08850}; Single-pass type IV membrane protein. Cell projection, neuron projection {ECO:0000250 UniProtKB:Q08850}. Cell projection, stereocilium {ECO:0000250 UniProtKB:P70452}. Note=Localizes to neurite tips in neuronal cells. {ECO:0000250 UniProtKB:Q08850}</p>
Tissue Location	Expressed in neutrophils and neutrophil- differentiated HL-60 cells.

Expression in neutrophils increases with differentiation.

Images



Please note: All products are 'FOR RESEARCH USE ONLY. NOT FOR USE IN DIAGNOSTIC OR THERAPEUTIC PROCEDURES'.