

EPHA10 Antibody (N-term)

Purified Rabbit Polyclonal Antibody (Pab)

Catalog # AP7614a

Product Information

Application	WB, IHC-P, E
Primary Accession	Q5JZY3
Other Accession	Q8BYG9 , P54759 , Q61772 , Q15375 , Q42422
Reactivity	Human
Predicted	Chicken, Mouse, Rat
Host	Rabbit
Clonality	Polyclonal
Isotype	Rabbit IgG
Clone Names	RB13038
Calculated MW	109716
Antigen Region	149-179

Additional Information

Gene ID	284656
Other Names	Ephrin type-A receptor 10, EPHA10
Target/Specificity	This EPHA10 antibody is generated from rabbits immunized with a KLH conjugated synthetic peptide between 149-179 amino acids from the N-terminal region of human EPHA10.
Dilution	WB~~1:1000 IHC-P~~1:100~500 E~~Use at an assay dependent concentration.
Format	Purified polyclonal antibody supplied in PBS with 0.09% (W/V) sodium azide. This antibody is prepared by Saturated Ammonium Sulfate (SAS) precipitation followed by dialysis against PBS.
Storage	Maintain refrigerated at 2-8°C for up to 2 weeks. For long term storage store at -20°C in small aliquots to prevent freeze-thaw cycles.
Precautions	EPHA10 Antibody (N-term) is for research use only and not for use in diagnostic or therapeutic procedures.

Protein Information

Name	EPHA10
Function	Receptor for members of the ephrin-A family. Binds to EFNA3, EFNA4 and EFNA5.

Cellular Location	[Isoform 1]: Cell membrane; Single- pass type I membrane protein [Isoform 2]: Secreted.
Tissue Location	Mainly expressed in testis.

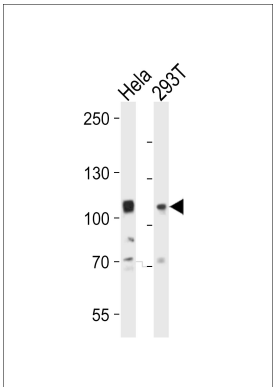
Background

EPHA10 is a receptor for members of the ephrin-A family. It binds to EFNA3, EFNA4 and EFNA5.

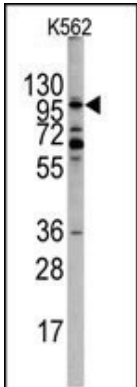
References

Aasheim,H.C., Biochim. Biophys. Acta 1723 (1-3), 1-7 (2005)

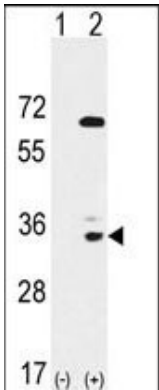
Images



Western blot analysis of lysates from HeLa, 293T cell line (from left to right), using EPHA10 Antibody (N-term)(Cat. #AP7614a). AP7614a was diluted at 1:1000 at each lane. A goat anti-rabbit IgG H&L(HRP) at 1:10000 dilution was used as the secondary antibody. Lysates at 20ug per lane.

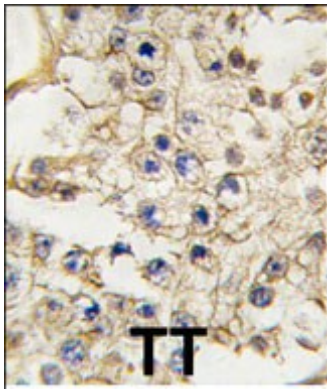


Western blot analysis of EPHA10 Antibody (N-term) (Cat.#AP7614a) in K562 cell line lysates (35ug/lane). EPHA10 (arrow) was detected using the purified Pab.



Western blot analysis of EPHA10 (arrow) using rabbit polyclonal EPHA10 Antibody (N-term) (Cat. #AP7614a). 293 cell lysates (2 ug/lane) either nontransfected (Lane 1) or transiently transfected with the EPHA10 gene (Lane 2) (Origene Technologies).(2ug/ml)

Formalin-fixed and paraffin-embedded human testis tissue reacted with EPHA10 antibody (N-term), which was peroxidase-conjugated to the secondary antibody,



followed by DAB staining. This data demonstrates the use of this antibody for immunohistochemistry; clinical relevance has not been evaluated.

Please note: All products are 'FOR RESEARCH USE ONLY. NOT FOR USE IN DIAGNOSTIC OR THERAPEUTIC PROCEDURES'.