

TCF4 Rabbit mAb

Catalog # AP76160

Product Information

Application	WB, IHC-P, FC
Primary Accession	Q9NQB0
Reactivity	Human
Host	Rabbit
Clonality	Monoclonal Antibody
Isotype	IgG
Conjugate	Unconjugated
Purification	Affinity Purified
Calculated MW	67919

Additional Information

Gene ID	6934
Other Names	TCF7L2
Dilution	WB~~1:1000-1:5000 IHC-P~~N/A FC~~1:50-1:100
Format	Liquid in 50mM Tris-Glycine(pH 7.4), 0.15M NaCl, 40%Glycerol, 0.01% sodium azide and 0.05% BSA.
Storage	Store at 4°C short term. Aliquot and store at -20°C long term. Avoid freeze/thaw cycles.

Protein Information

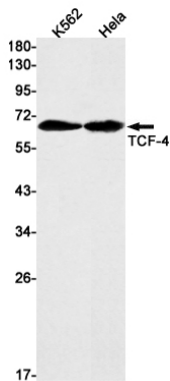
Name	TCF7L2
Synonyms	TCF4
Function	Participates in the Wnt signaling pathway and modulates MYC expression by binding to its promoter in a sequence-specific manner. Acts as a repressor in the absence of CTNNB1, and as activator in its presence. Activates transcription from promoters with several copies of the Tcf motif 5'-CCTTGATC-3' in the presence of CTNNB1. TLE1, TLE2, TLE3 and TLE4 repress transactivation mediated by TCF7L2/TCF4 and CTNNB1. Expression of dominant-negative mutants results in cell-cycle arrest in G1. Necessary for the maintenance of the epithelial stem-cell compartment of the small intestine.
Cellular Location	Nucleus, PML body. Nucleus. Note=Diffuse pattern. Colocalizes with SUMO1 and PIAS4 in a subset of PML (promyelocytic leukemia) nuclear bodies
Tissue Location	Detected in epithelium from small intestine, with the highest expression at

the top of the crypts and a gradient of expression from crypt to villus. Detected in colon epithelium and colon cancer, and in epithelium from mammary gland and carcinomas derived therefrom.

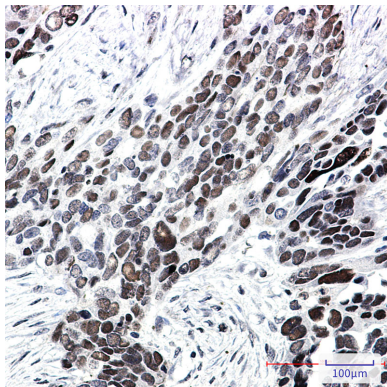
Background

This gene encodes a high mobility group (HMG) box-containing transcription factor that plays a key role in the Wnt signaling pathway. The protein has been implicated in blood glucose homeostasis. Genetic variants of this gene are associated with increased risk of type 2 diabetes. Several transcript variants encoding multiple different isoforms have been found for this gene.

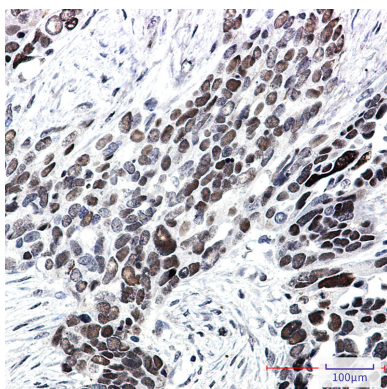
Images

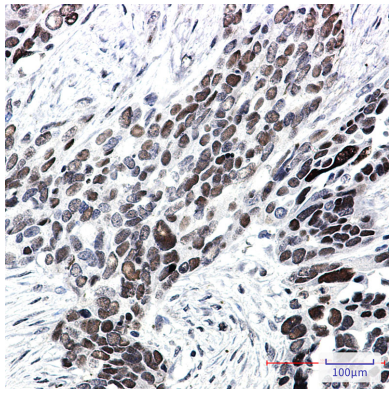


Western blot analysis of TCF4 in K562, HeLa lysates using Transcription Factor 7 Like 2 antibody.



Immunohistochemistry analysis of paraffin-embedded Human Cholangiocarcinoma using TCF4 antibody. High-pressure and temperature Sodium Citrate pH 6.0 was used for antigen retrieval.





Please note: All products are 'FOR RESEARCH USE ONLY. NOT FOR USE IN DIAGNOSTIC OR THERAPEUTIC PROCEDURES'.