

Transcriptional Enhancer Factor TEF Rabbit mAb

Catalog # AP76166

Product Information

| | |
|-------------------|------------------------|
| Application | WB |
| Primary Accession | Q15561 |
| Reactivity | Human |
| Host | Rabbit |
| Clonality | Monoclonal Antibody |
| Calculated MW | 48329 |

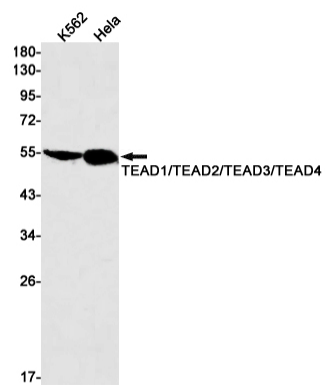
Additional Information

| | |
|-------------|------------------|
| Gene ID | 7004 |
| Other Names | TEAD4 |
| Dilution | WB~~1/500-1/1000 |
| Format | Liquid |

Protein Information

| | |
|-------------------|---|
| Name | TEAD4 |
| Synonyms | RTEF1, TCF13L1, TEF3 |
| Function | Transcription factor which plays a key role in the Hippo signaling pathway, a pathway involved in organ size control and tumor suppression by restricting proliferation and promoting apoptosis. The core of this pathway is composed of a kinase cascade wherein MST1/MST2, in complex with its regulatory protein SAV1, phosphorylates and activates LATS1/2 in complex with its regulatory protein MOB1, which in turn phosphorylates and inactivates YAP1 oncoprotein and WWTR1/TAZ. Acts by mediating gene expression of YAP1 and WWTR1/TAZ, thereby regulating cell proliferation, migration and epithelial mesenchymal transition (EMT) induction. Binds specifically and non-cooperatively to the Sph and GT-IIC 'enhansons' (5'-GTGGAATGT-3') and activates transcription. Binds to the M-CAT motif. |
| Cellular Location | Nucleus. |
| Tissue Location | Preferentially expressed in skeletal muscle. Lower levels in pancreas, placenta, and heart |

Images



Please note: All products are 'FOR RESEARCH USE ONLY. NOT FOR USE IN DIAGNOSTIC OR THERAPEUTIC PROCEDURES'.