

TIAM2 Rabbit mAb

Catalog # AP76175

Product Information

Application	WB, IHC-P, IHC-F, ICC
Primary Accession	Q8IVF5
Reactivity	Human
Host	Rabbit
Clonality	Monoclonal Antibody
Calculated MW	190103

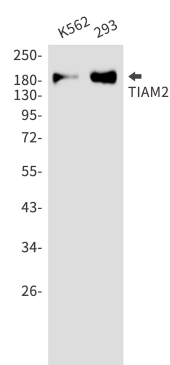
Additional Information

Gene ID	26230
Other Names	TIAM2
Dilution	WB~~1/500-1/1000 IHC-P~~N/A IHC-F~~N/A ICC~~N/A
Format	Liquid

Protein Information

Name	TIAM2
Synonyms	KIAA2016, STEF
Function	Modulates the activity of RHO-like proteins and connects extracellular signals to cytoskeletal activities. Acts as a GDP- dissociation stimulator protein that stimulates the GDP-GTP exchange activity of RHO-like GTPases and activates them. Mediates extracellular laminin signals to activate Rac1, contributing to neurite growth. Involved in lamellipodial formation and advancement of the growth cone of embryonic hippocampal neurons. Promotes migration of neurons in the cerebral cortex. When overexpressed, induces membrane ruffling accompanied by the accumulation of actin filaments along the altered plasma membrane (By similarity). Activates specifically RAC1, but not CDC42 and RHOA.
Cellular Location	Cytoplasm {ECO:0000250 UniProtKB:Q6ZPF3}. Cell projection, lamellipodium {ECO:0000250 UniProtKB:Q6ZPF3}. Cell projection, filopodium {ECO:0000250 UniProtKB:Q6ZPF3}. Cell projection, growth cone {ECO:0000250 UniProtKB:Q6ZPF3}. Cell projection, neuron projection {ECO:0000250 UniProtKB:Q6ZPF3}. Perikaryon {ECO:0000250 UniProtKB:Q6ZPF3}
Tissue Location	Expressed in the occipital, frontal and temporal lobes, cerebellum, putamen and testis.

Images



Please note: All products are 'FOR RESEARCH USE ONLY. NOT FOR USE IN DIAGNOSTIC OR THERAPEUTIC PROCEDURES'.