

TMEM192 Rabbit mAb

Catalog # AP76180

Product Information

Application	WB, FC
Primary Accession	Q8IY95
Reactivity	Human
Host	Rabbit
Clonality	Monoclonal Antibody
Isotype	IgG
Conjugate	Unconjugated
Purification	Affinity Purified
Calculated MW	30922

Additional Information

Gene ID	201931
Other Names	TMEM192
Dilution	WB~~1:1000-1:5000 FC~~1:100-1:200
Format	Liquid in 50mM Tris-Glycine(pH 7.4), 0.15M NaCl, 40%Glycerol, 0.01% sodium azide and 0.05% BSA.
Storage	Store at 4°C short term. Aliquot and store at -20°C long term. Avoid freeze/thaw cycles.

Protein Information

Name	TMEM192
Cellular Location	Lysosome membrane; Multi-pass membrane protein. Late endosome
Tissue Location	Strongly expressed in kidney, liver, lung and pancreas.

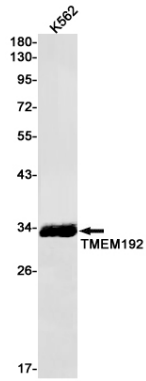
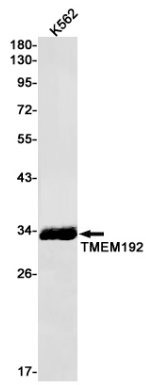
Background

Enables protein homodimerization activity. Located in several cellular components, including late endosome; lysosomal membrane; and perinuclear region of cytoplasm.

Images

Western blot analysis of TMEM192 in K562 lysates using

Transmembrane Protein 192 antibody.



Please note: All products are 'FOR RESEARCH USE ONLY. NOT FOR USE IN DIAGNOSTIC OR THERAPEUTIC PROCEDURES'.