

TRAF6 Rabbit mAb

Catalog # AP76191

Product Information

| | |
|-------------------|------------------------|
| Application | WB |
| Primary Accession | Q9Y4K3 |
| Reactivity | Human, Rat |
| Host | Rabbit |
| Clonality | Monoclonal Antibody |
| Calculated MW | 59573 |

Additional Information

| | |
|-------------|------------------|
| Gene ID | 7189 |
| Other Names | TRAF6 |
| Dilution | WB~~1/500-1/1000 |
| Format | Liquid |

Protein Information

| | |
|----------|--|
| Name | TRAF6 |
| Synonyms | RNF85 |
| Function | <p>E3 ubiquitin ligase that, together with UBE2N and UBE2V1, mediates the synthesis of 'Lys-63'-linked-polyubiquitin chains conjugated to proteins, such as ECSIT, IKBKG, IRAK1, AKT1 and AKT2 (PubMed:11057907, PubMed:18347055, PubMed:19465916, PubMed:19713527, PubMed:27746020, PubMed:31620128). Also mediates ubiquitination of free/unanchored polyubiquitin chain that leads to MAP3K7 activation (PubMed:19675569). Leads to the activation of NF-kappa-B and JUN (PubMed:16378096, PubMed:17135271, PubMed:17703191). Seems to also play a role in dendritic cells (DCs) maturation and/or activation (By similarity). Represses c-Myb-mediated transactivation, in B-lymphocytes (PubMed:18093978, PubMed:18758450). Adapter protein that seems to play a role in signal transduction initiated via TNF receptor, IL-1 receptor and IL-17 receptor (PubMed:12140561, PubMed:19825828, PubMed:8837778). Regulates osteoclast differentiation by mediating the activation of adapter protein complex 1 (AP-1) and NF-kappa-B, in response to RANK-L stimulation (By similarity). Together with MAP3K8, mediates CD40 signals that activate ERK in B-cells and macrophages, and thus may play a role in the regulation of immunoglobulin production (By similarity). Acts as a regulator of the JNK and NF-kappa-B signaling pathways by initiating assembly of heterotypic 'Lys-63'-/'Lys-48'-linked branched ubiquitin chains that are then recognized by</p> |

TAB2: TRAF6 catalyzes initial 'Lys-63'-linked-polyubiquitin chains that are then branched via 'Lys-48'-linked polyubiquitin by HUWE1 (PubMed:[27746020](#)). 'Lys- 63'-/'Lys-48'-linked branched ubiquitin chains protect 'Lys-63'- linkages from CYLD deubiquitination (PubMed:[27746020](#)). Participates also in the TCR signaling by ubiquitinating LAT (PubMed:[23514740](#), PubMed:[25907557](#)).

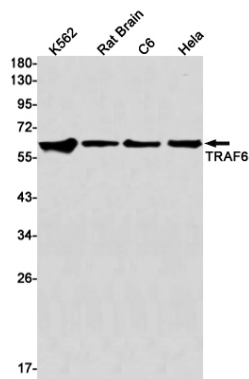
Cellular Location

Cytoplasm. Cytoplasm, cell cortex. Nucleus. Lipid droplet {ECO:0000250|UniProtKB:P70196}. Note=Found in the nuclei of some aggressive B-cell lymphoma cell lines as well as in the nuclei of both resting and activated T- and B-lymphocytes. Found in punctate nuclear body protein complexes. Ubiquitination may occur in the cytoplasm and sumoylation in the nucleus. RSAD2/viperin recruits it to the lipid droplet (By similarity).

Tissue Location

Expressed in heart, brain, placenta, lung, liver, skeletal muscle, kidney and pancreas

Images



Please note: All products are 'FOR RESEARCH USE ONLY. NOT FOR USE IN DIAGNOSTIC OR THERAPEUTIC PROCEDURES'.