

TRAF6 Rabbit mAb

Catalog # AP76192

Product Information

Application	WB
Primary Accession	Q9Y4K3
Host	Rabbit
Clonality	Monoclonal Antibody
Calculated MW	59573

Additional Information

Gene ID	7189
Other Names	TRAF6
Dilution	WB~~1/500-1/1000
Format	50mM Tris-Glycine(pH 7.4), 0.15M NaCl, 40%Glycerol, 0.01% sodium azide and 0.05% BSA.
Storage	Store at 4°C short term. Aliquot and store at -20°C long term. Avoid freeze/thaw cycles.

Protein Information

Name	TRAF6
Synonyms	RNF85
Function	<p>E3 ubiquitin ligase that, together with UBE2N and UBE2V1, mediates the synthesis of 'Lys-63'-linked-polyubiquitin chains conjugated to proteins, such as ECSIT, IKBKG, IRAK1, AKT1 and AKT2 (PubMed:11057907, PubMed:18347055, PubMed:19465916, PubMed:19713527, PubMed:27746020, PubMed:31620128). Also mediates ubiquitination of free/unanchored polyubiquitin chain that leads to MAP3K7 activation (PubMed:19675569). Leads to the activation of NF-kappa-B and JUN (PubMed:16378096, PubMed:17135271, PubMed:17703191). Seems to also play a role in dendritic cells (DCs) maturation and/or activation (By similarity). Represses c-Myb-mediated transactivation, in B-lymphocytes (PubMed:18093978, PubMed:18758450). Adapter protein that seems to play a role in signal transduction initiated via TNF receptor, IL-1 receptor and IL-17 receptor (PubMed:12140561, PubMed:19825828, PubMed:8837778). Regulates osteoclast differentiation by mediating the activation of adapter protein complex 1 (AP-1) and NF-kappa-B, in response to RANK-L stimulation (By similarity). Together with MAP3K8, mediates CD40 signals that activate ERK in B-cells and macrophages, and thus may play a role in the regulation of</p>

immunoglobulin production (By similarity). Acts as a regulator of the JNK and NF-kappa-B signaling pathways by initiating assembly of heterotypic 'Lys-63'-'Lys-48'-linked branched ubiquitin chains that are then recognized by TAB2: TRAF6 catalyzes initial 'Lys-63'-linked-polyubiquitin chains that are then branched via 'Lys-48'-linked polyubiquitin by HUWE1 (PubMed:[27746020](#)). 'Lys-63'-'Lys-48'-linked branched ubiquitin chains protect 'Lys-63'- linkages from CYLD deubiquitination (PubMed:[27746020](#)). Participates also in the TCR signaling by ubiquitinating LAT (PubMed:[23514740](#), PubMed:[25907557](#)).

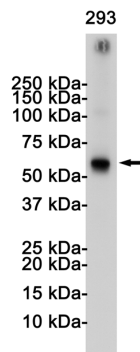
Cellular Location

Cytoplasm. Cytoplasm, cell cortex. Nucleus. Lipid droplet {ECO:0000250|UniProtKB:P70196}. Note=Found in the nuclei of some aggressive B-cell lymphoma cell lines as well as in the nuclei of both resting and activated T- and B-lymphocytes. Found in punctate nuclear body protein complexes. Ubiquitination may occur in the cytoplasm and sumoylation in the nucleus. RSAD2/viperin recruits it to the lipid droplet (By similarity).

Tissue Location

Expressed in heart, brain, placenta, lung, liver, skeletal muscle, kidney and pancreas

Images



Please note: All products are 'FOR RESEARCH USE ONLY. NOT FOR USE IN DIAGNOSTIC OR THERAPEUTIC PROCEDURES'.