

TAX1BP1 Rabbit mAb

Catalog # AP76193

Product Information

Application	WB, IHC-P
Primary Accession	Q86VP1
Reactivity	Human
Host	Rabbit
Clonality	Monoclonal Antibody
Calculated MW	90877

Additional Information

Gene ID	8887
Other Names	TAX1BP1
Dilution	WB~~1/500-1/1000 IHC-P~~N/A
Format	Liquid

Protein Information

Name	TAX1BP1
Synonyms	T6BP
Function	<p>Ubiquitin-binding adapter that participates in inflammatory, antiviral and innate immune processes as well as selective autophagy regulation (PubMed:29940186, PubMed:30459273, PubMed:30909570). Plays a key role in the negative regulation of NF-kappa-B and IRF3 signalings by acting as an adapter for the ubiquitin-editing enzyme A20/TNFAIP3 to bind and inactivate its substrates (PubMed:17703191). Disrupts the interactions between the E3 ubiquitin ligase TRAF3 and TBK1/IKBKE to attenuate 'Lys63'-linked polyubiquitination of TBK1 and thereby IFN- beta production (PubMed:21885437). Also recruits A20/TNFAIP3 to ubiquitinated signaling proteins TRAF6 and RIPK1, leading to their deubiquitination and disruption of IL-1 and TNF-induced NF-kappa-B signaling pathways (PubMed:17703191). Inhibits virus-induced apoptosis by inducing the 'Lys-48'-linked polyubiquitination and degradation of MAVS via recruitment of the E3 ligase ITCH, thereby attenuating MAVS- mediated apoptosis signaling (PubMed:27736772). As a macroautophagy/autophagy receptor, facilitates the xenophagic clearance of pathogenic bacteria such as Salmonella typhimurium and Mycobacterium tuberculosis (PubMed:26451915). Upon NBR1 recruitment to the SQSTM1- ubiquitin condensates, acts as the major recruiter of RB1CC1 to these ubiquitin condensates to promote their autophagic degradation (PubMed:33226137, PubMed:34471133). Mediates</p>

the autophagic degradation of other substrates including TICAM1 (PubMed:[28898289](#)).

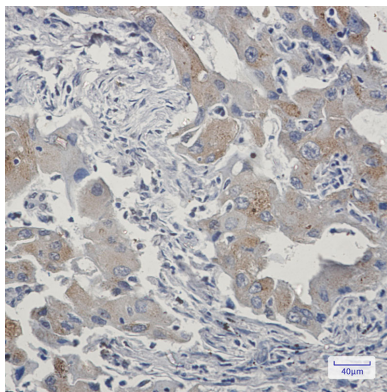
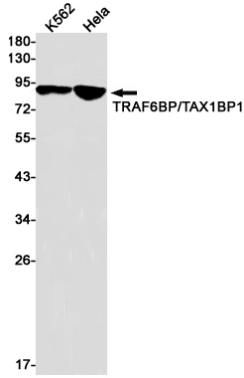
Cellular Location

Cytoplasm. Mitochondrion. Preautophagosomal structure Cytoplasmic vesicle, autophagosome

Tissue Location

Expressed in all tissues tested.

Images



Please note: All products are 'FOR RESEARCH USE ONLY. NOT FOR USE IN DIAGNOSTIC OR THERAPEUTIC PROCEDURES'.