

# UFD1 Rabbit mAb

Catalog # AP76230

## Product Information

---

Application	WB
Primary Accession	<a href="#">Q92890</a>
Reactivity	Human
Host	Rabbit
Clonality	Monoclonal Antibody
Calculated MW	34500

## Additional Information

---

Gene ID	7353
Other Names	UFD1
Dilution	WB~~1/500-1/1000
Format	50mM Tris-Glycine(pH 7.4), 0.15M NaCl, 40%Glycerol, 0.01% sodium azide and 0.05% BSA.

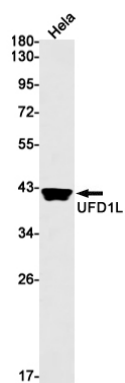
## Protein Information

---

Name	UFD1 ( <a href="#">HGNC:12520</a> )
Synonyms	UFD1L
Function	Essential component of the ubiquitin-dependent proteolytic pathway which degrades ubiquitin fusion proteins. The ternary complex containing UFD1, VCP and NPLOC4 binds ubiquitinated proteins and is necessary for the export of misfolded proteins from the ER to the cytoplasm, where they are degraded by the proteasome. The NPLOC4-UFD1- VCP complex regulates spindle disassembly at the end of mitosis and is necessary for the formation of a closed nuclear envelope. It may be involved in the development of some ectoderm-derived structures (By similarity). Acts as a negative regulator of type I interferon production via the complex formed with VCP and NPLOC4, which binds to RIGI and recruits RNF125 to promote ubiquitination and degradation of RIGI (PubMed: <a href="#">26471729</a> ).
Cellular Location	Nucleus {ECO:0000250 UniProtKB:Q9ES53}. Cytoplasm, cytosol {ECO:0000250 UniProtKB:Q9ES53}
Tissue Location	Found in adult heart, skeletal muscle and pancreas, and in fetal liver and kidney

## Images

---



Please note: All products are 'FOR RESEARCH USE ONLY. NOT FOR USE IN DIAGNOSTIC OR THERAPEUTIC PROCEDURES'.