

VAMP2 Rabbit mAb

Catalog # AP76237

Product Information

Application	WB, FC, IP
Primary Accession	P63027
Reactivity	Rat, Human, Mouse
Host	Rabbit
Clonality	Monoclonal Antibody
Isotype	IgG
Conjugate	Unconjugated
Purification	Affinity Purified
Calculated MW	13 KDa

Additional Information

Other Names	VAMP2
Dilution	WB~~1:1000-1:5000 FC~~1:50-1:100 IP~~1:100-1:200
Format	Liquid in 50mM Tris-Glycine(pH 7.4), 0.15M NaCl, 40%Glycerol, 0.01% sodium azide and 0.05% BSA.
Storage	Store at 4°C short term. Aliquot and store at -20°C long term. Avoid freeze/thaw cycles.

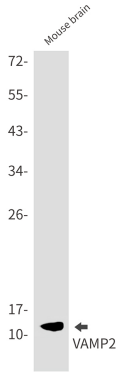
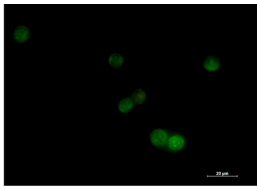
Protein Information

Background

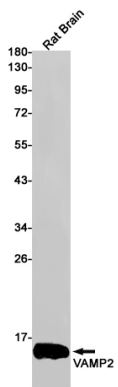
The protein encoded by this gene is a member of the vesicle-associated membrane protein (VAMP)/synaptobrevin family. Synaptobrevins/VAMPs, syntaxins, and the 25-kD synaptosomal-associated protein SNAP25 are the main components of a protein complex involved in the docking and/or fusion of synaptic vesicles with the presynaptic membrane. This gene is thought to participate in neurotransmitter release at a step between docking and fusion. The protein forms a stable complex with syntaxin, synaptosomal-associated protein, 25 kD, and synaptotagmin. It also forms a distinct complex with synaptophysin. It is a likely candidate gene for familial infantile myasthenia (FIMG) because of its map location and because it encodes a synaptic vesicle protein of the type that has been implicated in the pathogenesis of FIMG.

Images

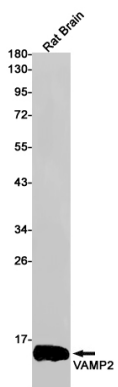
Immunocytochemistry analysis of VAMP2 (green) in Jurkat using VAMP2 antibody, and DAPI(blue).



Western blot analysis of VAMP2 in mouse brain lysates using VAMP2 antibody.



Western blot analysis of VAMP2 in rat Brain lysates using VAMP2 antibody



Please note: All products are 'FOR RESEARCH USE ONLY. NOT FOR USE IN DIAGNOSTIC OR THERAPEUTIC PROCEDURES'.