

# Vitronectin Rabbit mAb

Catalog # AP76251

## Product Information

---

|                          |                        |
|--------------------------|------------------------|
| <b>Application</b>       | WB, IHC-P, IHC-F, ICC  |
| <b>Primary Accession</b> | <a href="#">P04004</a> |
| <b>Reactivity</b>        | Human                  |
| <b>Host</b>              | Rabbit                 |
| <b>Clonality</b>         | Monoclonal Antibody    |
| <b>Calculated MW</b>     | 54306                  |

## Additional Information

---

|                    |   |
|--------------------|---|
| <b>Gene ID</b>     | 7448  |
| <b>Other Names</b> | VTN   |
| <b>Dilution</b>    | WB~~1/500-1/1000 IHC-P~~N/A IHC-F~~N/A ICC~~N/A                                       |
| <b>Format</b>      | 50mM Tris-Glycine(pH 7.4), 0.15M NaCl, 40%Glycerol, 0.01% sodium azide and 0.05% BSA. |

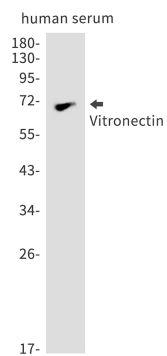
## Protein Information

---

|                          |  |
|--------------------------|--|
| <b>Name</b>              | VTN  |
| <b>Function</b>          | Vitronectin is a cell adhesion and spreading factor found in serum and tissues. Vitronectin interact with glycosaminoglycans and proteoglycans. Is recognized by certain members of the integrin family and serves as a cell-to-substrate adhesion molecule. Inhibitor of the membrane-damaging effect of the terminal cytolytic complement pathway. |
| <b>Cellular Location</b> | Secreted, extracellular space  |
| <b>Tissue Location</b>   | Expressed in the retina pigment epithelium (at protein level) (PubMed:25136834). Expressed in plasma (at protein level) (PubMed:2448300). Expressed in serum (at protein level) (PubMed:29567995).   |

## Images

---



Please note: All products are 'FOR RESEARCH USE ONLY. NOT FOR USE IN DIAGNOSTIC OR THERAPEUTIC PROCEDURES'.