

# WDR1 Rabbit mAb

Catalog # AP76257

## Product Information

Application	WB, IHC-P, IHC-F, ICC
Primary Accession	<a href="#">O75083</a>
Reactivity	Human
Host	Rabbit
Clonality	Monoclonal Antibody
Calculated MW	66194

## Additional Information

Gene ID	9948
Other Names	WDR1
Dilution	WB~~1/500-1/1000 IHC-P~~N/A IHC-F~~N/A ICC~~N/A
Format	50mM Tris-Glycine(pH 7.4), 0.15M NaCl, 40%Glycerol, 0.01% sodium azide and 0.05% BSA.
Storage	Store at 4°C short term. Aliquot and store at -20°C long term. Avoid freeze/thaw cycles.

## Protein Information

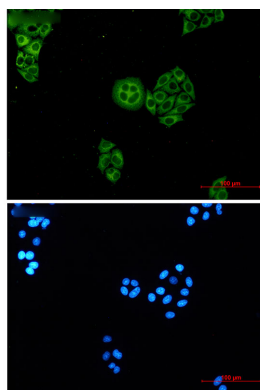
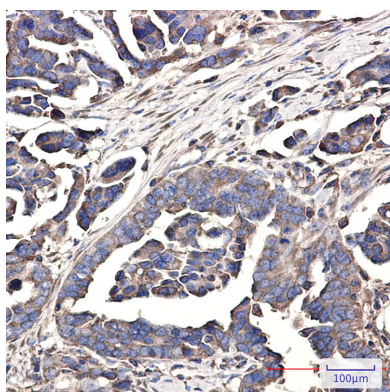
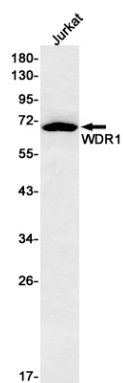
Name	WDR1
Function	Induces disassembly of actin filaments in conjunction with ADF/cofilin family proteins (PubMed: <a href="#">15629458</a> , PubMed: <a href="#">27557945</a> , PubMed: <a href="#">29751004</a> ). Enhances cofilin-mediated actin severing (By similarity). Involved in cytokinesis. Involved in chemotactic cell migration by restricting lamellipodial membrane protrusions (PubMed: <a href="#">18494608</a> ). Involved in myocardium sarcomere organization. Required for cardiomyocyte growth and maintenance (By similarity). Involved in megakaryocyte maturation and platelet shedding. Required for the establishment of planar cell polarity (PCP) during follicular epithelium development and for cell shape changes during PCP; the function seems to implicate cooperation with CFL1 and/or DSTN/ADF. Involved in the generation/maintenance of cortical tension (By similarity). Involved in assembly and maintenance of epithelial apical cell junctions and plays a role in the organization of the perijunctional actomyosin belt (PubMed: <a href="#">25792565</a> ).
Cellular Location	Cytoplasm. Cytoplasm, cytoskeleton {ECO:0000250 UniProtKB:Q5RKI0}. Cell projection, podosome. Cell junction

## Tissue Location

Expressed in peripheral blood mononuclear cells (at protein level).

## Images

---



Please note: All products are 'FOR RESEARCH USE ONLY. NOT FOR USE IN DIAGNOSTIC OR THERAPEUTIC PROCEDURES'.