

WDR5 Rabbit mAb

Catalog # AP76258

Product Information

| | |
|--------------------------|------------------------|
| Application | WB, IHC-P, FC |
| Primary Accession | P61964 |
| Reactivity | Rat, Human, Mouse |
| Host | Rabbit |
| Clonality | Monoclonal Antibody |
| Isotype | IgG |
| Conjugate | Unconjugated |
| Purification | Affinity Purified |
| Calculated MW | 37 KDa |

Additional Information

| | |
|--------------------|---|
| Other Names | WDR5 |
| Dilution | WB~~1:1000-1:5000 IHC-P~~N/A FC~~1:10-1:100 |
| Format | Liquid in 50mM Tris-Glycine(pH 7.4), 0.15M NaCl, 40%Glycerol, 0.01% sodium azide and 0.05% BSA. |
| Storage | Store at 4°C short term. Aliquot and store at -20°C long term. Avoid freeze/thaw cycles. |

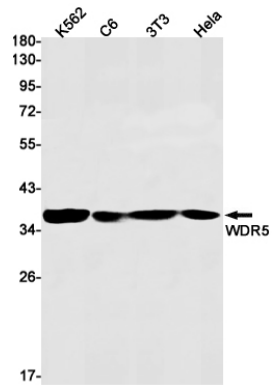
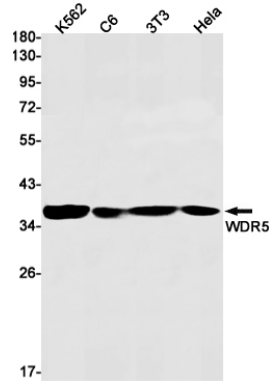
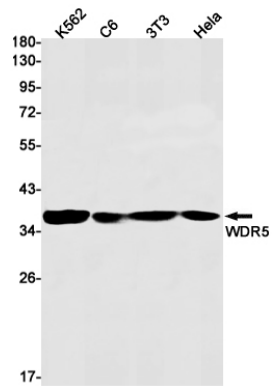
Protein Information

Background

Contributes to histone modification. May position the N-terminus of histone H3 for efficient trimethylation at 'Lys-4'. As part of the MLL1/MLL complex it is involved in methylation and dimethylation at 'Lys-4' of histone H3. H3 'Lys-4' methylation represents a specific tag for epigenetic transcriptional activation.

Images

Western blot analysis of WDR5 in K562, C6, 3T3, HeLa lysates using WDR5 antibody.



Please note: All products are 'FOR RESEARCH USE ONLY. NOT FOR USE IN DIAGNOSTIC OR THERAPEUTIC PROCEDURES'.