

ZYX Rabbit mAb

Catalog # AP76277

Product Information

Application	WB, IHC-P, IHC-F, IP, ICC
Primary Accession	Q15942
Reactivity	Human, Rat
Host	Rabbit
Clonality	Monoclonal Antibody
Calculated MW	61277

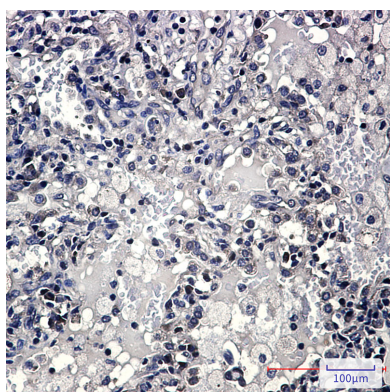
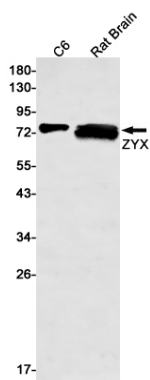
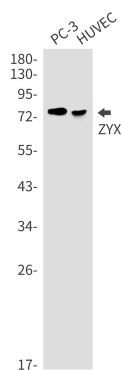
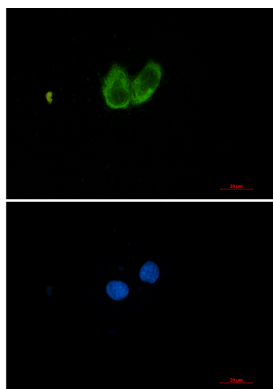
Additional Information

Gene ID	7791
Other Names	ZYX
Dilution	WB~~1/500-1/1000 IHC-P~~N/A IHC-F~~N/A IP~~1/20 ICC~~N/A
Format	50mM Tris-Glycine(pH 7.4), 0.15M NaCl, 40%Glycerol, 0.01% sodium azide and 0.05% BSA.

Protein Information

Name	ZYX
Function	Adhesion plaque protein. Binds alpha-actinin and the CRP protein. Important for targeting TES and ENA/VASP family members to focal adhesions and for the formation of actin-rich structures. May be a component of a signal transduction pathway that mediates adhesion- stimulated changes in gene expression (By similarity).
Cellular Location	Cytoplasm. Cytoplasm, cytoskeleton. Nucleus. Cell junction, focal adhesion. Note=Associates with the actin cytoskeleton near the adhesion plaques. Enters the nucleus in the presence of HESX1

Images



Please note: All products are 'FOR RESEARCH USE ONLY. NOT FOR USE IN DIAGNOSTIC OR THERAPEUTIC PROCEDURES'.