

CD147 Rabbit mAb

Catalog # AP76283

Product Information

Application	WB, IHC-P, IHC-F, ICC
Primary Accession	P35613
Reactivity	Human
Host	Rabbit
Clonality	Monoclonal Antibody
Calculated MW	42200

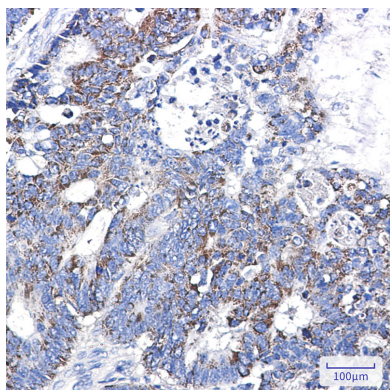
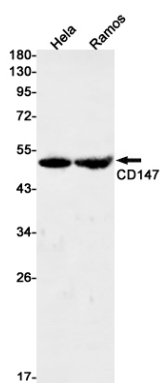
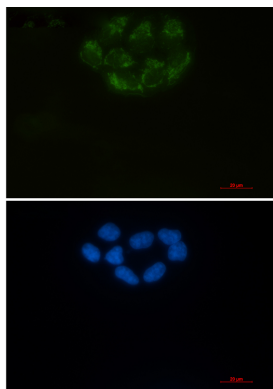
Additional Information

Gene ID	682
Other Names	BSG
Dilution	WB~~1/500-1/1000 IHC-P~~N/A IHC-F~~N/A ICC~~N/A
Format	Liquid

Protein Information

Name	BSG (HGNC:1116)
Function	[Isoform 1]: Essential for normal retinal maturation and development (By similarity). Acts as a retinal cell surface receptor for NXNL1 and plays an important role in NXNL1-mediated survival of retinal cone photoreceptors (PubMed: 25957687). In association with glucose transporter SLC16A1/GLUT1 and NXNL1, promotes retinal cone survival by enhancing aerobic glycolysis and accelerating the entry of glucose into photoreceptors (PubMed: 25957687). May act as a potent stimulator of IL6 secretion in multiple cell lines that include monocytes (PubMed: 21620857).
Cellular Location	Melanosome. Note=Identified by mass spectrometry in melanosome fractions from stage I to stage IV. [Isoform 2]: Cell membrane; Single-pass type I membrane protein {ECO:0000250 UniProtKB:P26453}. Endosome Endoplasmic reticulum membrane; Single- pass type I membrane protein {ECO:0000250 UniProtKB:P26453} Basolateral cell membrane; Single-pass type I membrane protein {ECO:0000250 UniProtKB:P26453} [Isoform 4]: Cell membrane; Single-pass type I membrane protein {ECO:0000250 UniProtKB:P26453}
Tissue Location	[Isoform 1]: Retina-specific (PubMed:25957687). Expressed in retinal cone photoreceptors (at protein level) (PubMed:25957687). [Isoform 3]: Highly expressed in the bone marrow, fetal liver, lung, testis and thymus.

Images



Please note: All products are 'FOR RESEARCH USE ONLY. NOT FOR USE IN DIAGNOSTIC OR THERAPEUTIC PROCEDURES'.