

RYK Rabbit mAb

Catalog # AP76288

Product Information

| | |
|--------------------------|---------------------------|
| Application | WB, IHC-P, IHC-F, IP, ICC |
| Primary Accession | P34925 |
| Reactivity | Human |
| Host | Rabbit |
| Clonality | Monoclonal Antibody |
| Calculated MW | 67815 |

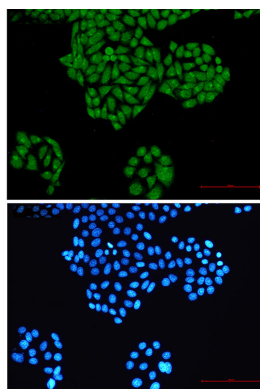
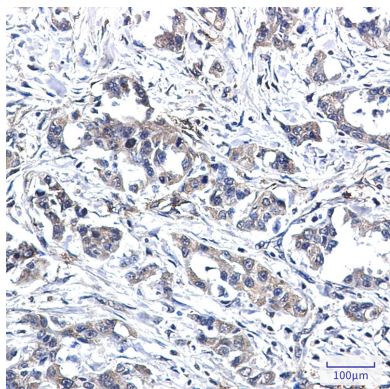
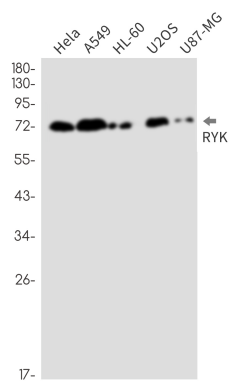
Additional Information

| | |
|--------------------|--|
| Gene ID | 6259 |
| Other Names | RYK |
| Dilution | WB~~1/500-1/1000 IHC-P~~N/A IHC-F~~N/A IP~~N/A ICC~~N/A |
| Format | 50mM Tris-Glycine(pH 7.4), 0.15M NaCl, 40%Glycerol, 0.01% sodium azide and 0.05% BSA. |
| Storage | Store at 4°C short term. Aliquot and store at -20°C long term. Avoid freeze/thaw cycles. |

Protein Information

| | |
|--------------------------|--|
| Name | RYK (HGNC:10481) |
| Synonyms | JTK5A |
| Function | May be a coreceptor along with FZD8 of Wnt proteins, such as WNT1, WNT3, WNT3A and WNT5A. Involved in neuron differentiation, axon guidance, corpus callosum establishment and neurite outgrowth. In response to WNT3 stimulation, receptor C-terminal cleavage occurs in its transmembrane region and allows the C-terminal intracellular product to translocate from the cytoplasm to the nucleus where it plays a crucial role in neuronal development. |
| Cellular Location | Membrane; Single-pass type I membrane protein. Nucleus. Cytoplasm. Note=In cells that have undergone neuronal differentiation, the C-terminal cleaved part is translocated from the cytoplasm to the nucleus. |
| Tissue Location | Observed in all the tissues examined. |

Images



Please note: All products are 'FOR RESEARCH USE ONLY. NOT FOR USE IN DIAGNOSTIC OR THERAPEUTIC PROCEDURES'.