

Osteopontin Rabbit mAb

Catalog # AP76291

Product Information

Application	WB, IHC-P
Primary Accession	P10451
Reactivity	Human, Rat, Hamster
Host	Rabbit
Clonality	Monoclonal Antibody
Calculated MW	35423

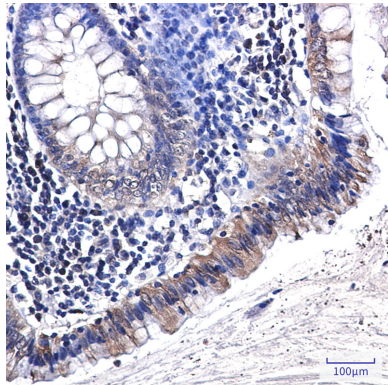
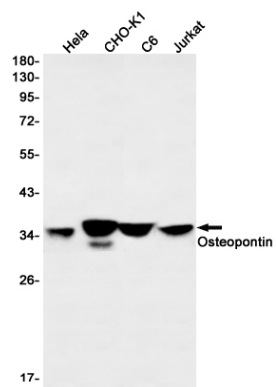
Additional Information

Gene ID	6696
Other Names	SPP1
Dilution	WB~~1/500-1/1000 IHC-P~~N/A
Format	50mM Tris-Glycine(pH 7.4), 0.15M NaCl, 40%Glycerol, 0.01% sodium azide and 0.05% BSA.
Storage	Store at 4°C short term. Aliquot and store at -20°C long term. Avoid freeze/thaw cycles.

Protein Information

Name	SPP1
Synonyms	BNSP, OPN
Function	Major non-collagenous bone protein that binds tightly to hydroxyapatite. Appears to form an integral part of the mineralized matrix. Probably important to cell-matrix interaction.
Cellular Location	Secreted
Tissue Location	Detected in cerebrospinal fluid and urine (at protein level) (PubMed:25326458, PubMed:36213313, PubMed:37453717) Bone. Found in plasma.

Images



Please note: All products are 'FOR RESEARCH USE ONLY. NOT FOR USE IN DIAGNOSTIC OR THERAPEUTIC PROCEDURES'.