

# Phospho-KIF22 (Ser427) Rabbit mAb

Catalog # AP76296

## Product Information

---

<b>Application</b>	WB
<b>Primary Accession</b>	<a href="#">Q14807</a>
<b>Reactivity</b>	Human
<b>Host</b>	Rabbit
<b>Clonality</b>	Monoclonal Antibody
<b>Calculated MW</b>	73262

## Additional Information

---

<b>Gene ID</b>	3835
<b>Other Names</b>	KIF22
<b>Dilution</b>	WB~~1/500-1/1000
<b>Format</b>	50mM Tris-Glycine(pH 7.4), 0.15M NaCl, 40%Glycerol, 0.01% sodium azide and 0.05% BSA.
<b>Storage</b>	Store at 4°C short term. Aliquot and store at -20°C long term. Avoid freeze/thaw cycles.

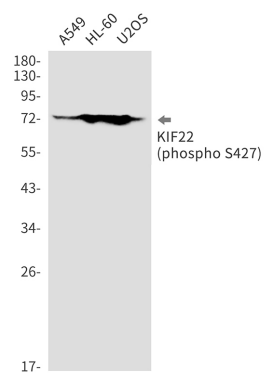
## Protein Information

---

<b>Name</b>	KIF22
<b>Synonyms</b>	KID, KNSL4
<b>Function</b>	Kinesin family member that is involved in spindle formation and the movements of chromosomes during mitosis and meiosis. Binds to microtubules and to DNA (By similarity). Plays a role in congression of laterally attached chromosomes in NDC80-depleted cells (PubMed: <a href="#">25743205</a> ).
<b>Cellular Location</b>	Nucleus. Cytoplasm, cytoskeleton
<b>Tissue Location</b>	Expressed in bone, cartilage, joint capsule, ligament, skin, and primary cultured chondrocytes

## Images

---



Please note: All products are 'FOR RESEARCH USE ONLY. NOT FOR USE IN DIAGNOSTIC OR THERAPEUTIC PROCEDURES'.