

Phospho-Filamin A/B (Ser2152/Ser2107) Rabbit mAb

Catalog # AP76340

Product Information

Application	WB, IHC-P, IHC-F, ICC
Primary Accession	O75369
Reactivity	Human, Rat
Host	Rabbit
Clonality	Monoclonal Antibody
Calculated MW	278164

Additional Information

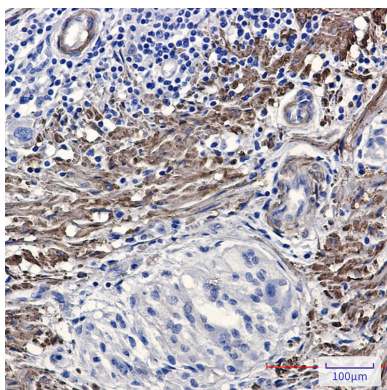
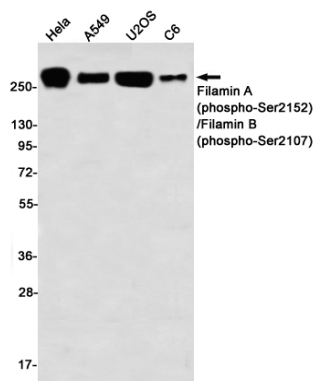
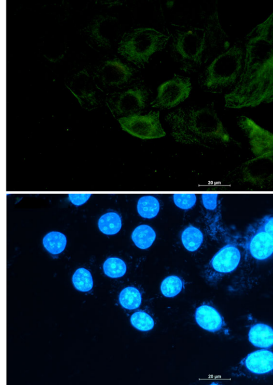
Gene ID	2317
Other Names	FLNB
Dilution	WB~~1/500-1/1000 IHC-P~~N/A IHC-F~~N/A ICC~~N/A
Format	50mM Tris-Glycine(pH 7.4), 0.15M NaCl, 40%Glycerol, 0.01% sodium azide and 0.05% BSA.

Protein Information

Name	FLNB
Synonyms	FLN1L, FLN3, TABP, TAP
Function	Connects cell membrane constituents to the actin cytoskeleton. May promote orthogonal branching of actin filaments and links actin filaments to membrane glycoproteins. Anchors various transmembrane proteins to the actin cytoskeleton. Interaction with FLNA may allow neuroblast migration from the ventricular zone into the cortical plate. Various interactions and localizations of isoforms affect myotube morphology and myogenesis. Isoform 6 accelerates muscle differentiation in vitro.
Cellular Location	[Isoform 1]: Cytoplasm, cell cortex. Cytoplasm, cytoskeleton. Cytoplasm, cytoskeleton, stress fiber. Cytoplasm, myofibril, sarcomere, Z line. Note=In differentiating myotubes, isoform 1, isoform 2 and isoform 3 are localized diffusely throughout the cytoplasm with regions of enrichment at the longitudinal actin stress fiber. In differentiated tubes, isoform 1 is also detected within the Z-lines [Isoform 3]: Cytoplasm, cytoskeleton, stress fiber
Tissue Location	Ubiquitous. Isoform 1 and isoform 2 are expressed in placenta, bone marrow, brain, umbilical vein endothelial cells (HUVEC), retina and skeletal muscle. Isoform 1 is predominantly expressed in prostate, uterus, liver, thyroid, stomach, lymph node, small intestine, spleen, skeletal muscle, kidney,

placenta, pancreas, heart, lung, platelets, endothelial cells, megakaryocytic and erythroleukemic cell lines. Isoform 2 is predominantly expressed in spinal cord, platelet and Daudi cells. Also expressed in thyroid adenoma, neurofibrillary tangles (NFT), senile plaques in the hippocampus and cerebral cortex in Alzheimer disease (AD). Isoform 3 and isoform 6 are expressed predominantly in lung, heart, skeletal muscle, testis, spleen, thymus and leukocytes. Isoform 4 and isoform 5 are expressed in heart.

Images



Please note: All products are 'FOR RESEARCH USE ONLY. NOT FOR USE IN DIAGNOSTIC OR THERAPEUTIC PROCEDURES'.