

# alpha 1 Antitrypsin Rabbit mAb

Catalog # AP76385

## Product Information

---

|                          |                        |
|--------------------------|------------------------|
| <b>Application</b>       | WB, IP                 |
| <b>Primary Accession</b> | <a href="#">P01009</a> |
| <b>Reactivity</b>        | Human                  |
| <b>Host</b>              | Rabbit                 |
| <b>Clonality</b>         | Monoclonal Antibody    |
| <b>Isotype</b>           | IgG                    |
| <b>Conjugate</b>         | Unconjugated           |
| <b>Purification</b>      | Affinity Purified      |
| <b>Calculated MW</b>     | 47 KDa                 |

## Additional Information

---

|                    |   |
|--------------------|---|
| <b>Other Names</b> | SERPINA1  |
| <b>Dilution</b>    | WB~~1:1000-1:5000 IP~~1:10-1:100  |
| <b>Format</b>      | Liquid in 50mM Tris-Glycine(pH 7.4), 0.15M NaCl, 40%Glycerol, 0.01% sodium azide and 0.05% BSA. |
| <b>Storage</b>     | Store at 4°C short term. Aliquot and store at -20°C long term. Avoid freeze/thaw cycles.        |

## Protein Information

---

### Background

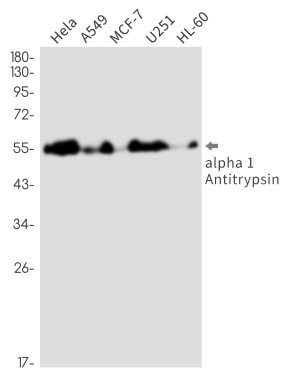
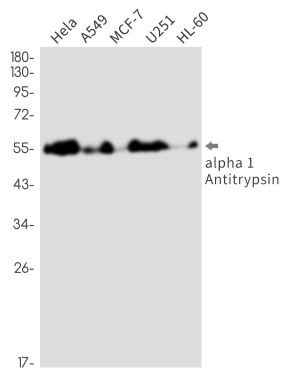
---

SERPINA1 is secreted and is a serine protease inhibitor which its targets include elastase, plasmin, collagenase, thrombin, leucocytic proteases, trypsin, chymotrypsin, and plasminogen activator. Inhibitor of serine proteases. Its primary target is elastase, but it also has a moderate affinity for plasmin and thrombin.

### Images

---

Western blot analysis of alpha 1 Antitrypsin in Hela, A549, MCF-7, U251, HL-60 lysates using alpha 1-Antitrypsin antibody.



Please note: All products are 'FOR RESEARCH USE ONLY. NOT FOR USE IN DIAGNOSTIC OR THERAPEUTIC PROCEDURES'.