

Bid Rabbit mAb

Catalog # AP76409

Product Information

Application	WB, IHC-P, FC, IP
Primary Accession	P55957
Reactivity	Human
Host	Rabbit
Clonality	Monoclonal Antibody
Isotype	IgG
Conjugate	Unconjugated
Purification	Affinity Purified
Calculated MW	21995

Additional Information

Gene ID	637
Other Names	BID
Dilution	WB~~1:500-1:1000 IHC-P~~N/A FC~~1:10~50 IP~~1:20
Format	Liquid in 50mM Tris-Glycine(pH 7.4), 0.15M NaCl, 40%Glycerol, 0.01% sodium azide and 0.05% BSA.
Storage	Store at 4°C short term. Aliquot and store at -20°C long term. Avoid freeze/thaw cycles.

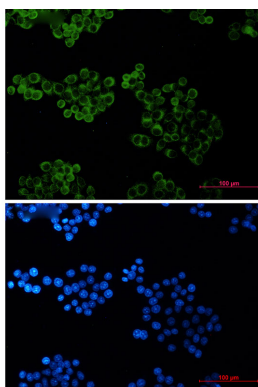
Protein Information

Name	BID
Function	Induces caspases and apoptosis (PubMed: 14583606). Counters the protective effect of BCL2 (By similarity).
Cellular Location	Cytoplasm. Mitochondrion membrane. Mitochondrion outer membrane. Note=When uncleaved, it is predominantly cytoplasmic. [BH3-interacting domain death agonist p13]: Mitochondrion membrane {ECO:0000250 UniProtKB:P70444}. Note=Associated with the mitochondrial membrane. {ECO:0000250 UniProtKB:P70444} [Isoform 3]: Cytoplasm
Tissue Location	[Isoform 2]: Expressed in spleen, pancreas and placenta (at protein level). [Isoform 4]: Expressed in lung and pancreas (at protein level).

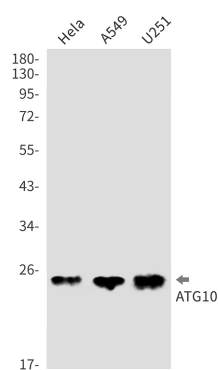
Background

The major proteolytic product p15 BID allows the release of cytochrome c (By similarity). Isoform 1, isoform 2 and isoform 4 induce ICE-like proteases and apoptosis. Isoform 3 does not induce apoptosis. Counters the protective effect of Bcl-2.

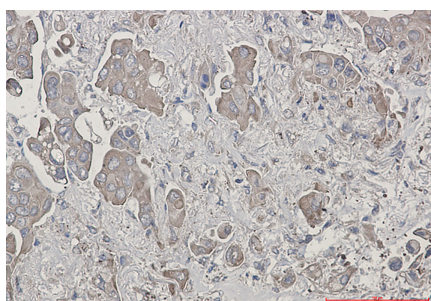
Images



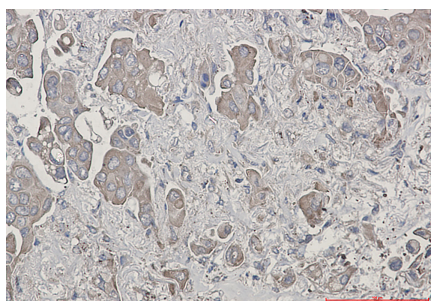
Immunocytochemistry analysis of Bid (green) in HeLa using Bid antibody, and DAPI (blue).



Western blot analysis of Bid in HeLa, A549, HL-60 lysates using Bid antibody.



Immunohistochemistry analysis of paraffin-embedded liver cancer tissue using Bid antibody. High-pressure and temperature Sodium Citrate pH 6.0 was used for antigen retrieval.



Please note: All products are 'FOR RESEARCH USE ONLY. NOT FOR USE IN DIAGNOSTIC OR THERAPEUTIC PROCEDURES'.