

# Cadherin 10 Rabbit mAb

Catalog # AP76415

## Product Information

---

<b>Application</b>	WB
<b>Primary Accession</b>	<a href="#">Q9Y6N8</a>
<b>Reactivity</b>	Human, Mouse, Rat
<b>Host</b>	Rabbit
<b>Clonality</b>	Monoclonal Antibody
<b>Calculated MW</b>	88451

## Additional Information

---

<b>Gene ID</b>	1008
<b>Other Names</b>	CDH10
<b>Dilution</b>	WB~~1/500-1/1000
<b>Format</b>	Liquid

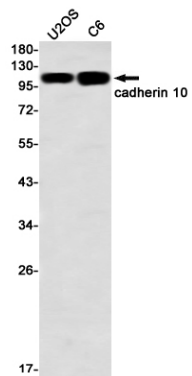
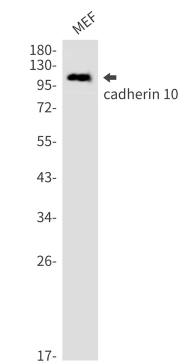
## Protein Information

---

<b>Name</b>	CDH10
<b>Function</b>	Cadherins are calcium-dependent cell adhesion proteins. They preferentially interact with themselves in a homophilic manner in connecting cells; cadherins may thus contribute to the sorting of heterogeneous cell types.
<b>Cellular Location</b>	Cell membrane; Single-pass type I membrane protein
<b>Tissue Location</b>	Predominantly expressed in brain. Also found in adult and fetal kidney. Very low levels detected in prostate and fetal lung.

## Images

---



Please note: All products are 'FOR RESEARCH USE ONLY. NOT FOR USE IN DIAGNOSTIC OR THERAPEUTIC PROCEDURES'.