

Calumenin Rabbit mAb

Catalog # AP76418

Product Information

Application	WB, IHC-P
Primary Accession	O43852
Reactivity	Human, Rat
Host	Rabbit
Clonality	Monoclonal Antibody
Calculated MW	37107

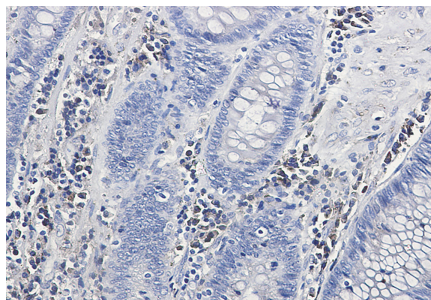
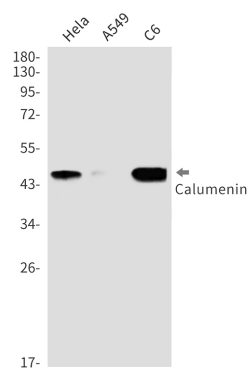
Additional Information

Gene ID	813
Other Names	CALU
Dilution	WB~~1/500-1/1000 IHC-P~~N/A
Format	Liquid

Protein Information

Name	CALU
Function	Involved in regulation of vitamin K-dependent carboxylation of multiple N-terminal glutamate residues. Seems to inhibit gamma- carboxylase GGCX. Binds 7 calcium ions with a low affinity (By similarity).
Cellular Location	Endoplasmic reticulum membrane. Golgi apparatus. Secreted. Melanosome. Sarcoplasmic reticulum lumen. Note=Identified by mass spectrometry in melanosome fractions from stage I to stage IV.
Tissue Location	Ubiquitously expressed. Expressed at high levels in heart, placenta and skeletal muscle, at lower levels in lung, kidney and pancreas and at very low levels in brain and liver

Images



Please note: All products are 'FOR RESEARCH USE ONLY. NOT FOR USE IN DIAGNOSTIC OR THERAPEUTIC PROCEDURES'.