

Casein Kinase 2 beta Rabbit mAb

Catalog # AP76420

Product Information

Application	WB, IHC-P, IHC-F, ICC
Primary Accession	P67870
Reactivity	Human, Mouse, Rat
Host	Rabbit
Clonality	Monoclonal Antibody
Calculated MW	24942

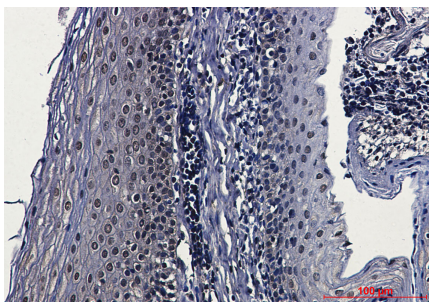
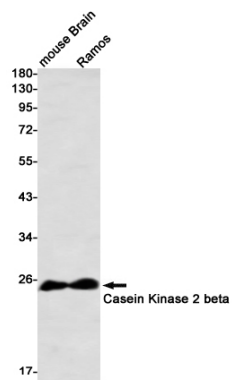
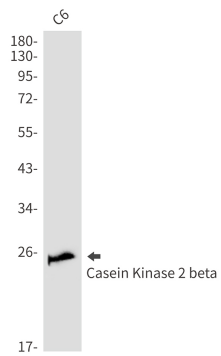
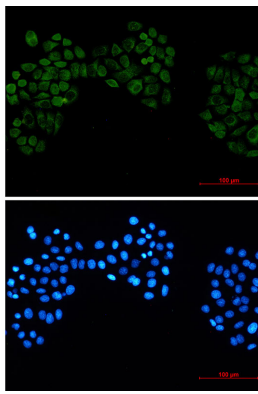
Additional Information

Gene ID	1460
Other Names	CSNK2B
Dilution	WB~~1/500-1/1000 IHC-P~~N/A IHC-F~~N/A ICC~~N/A
Format	Liquid

Protein Information

Name	CSNK2B (HGNC:2460)
Synonyms	CK2N, G5A
Function	Regulatory subunit of casein kinase II/CK2. As part of the kinase complex regulates the basal catalytic activity of the alpha subunit a constitutively active serine/threonine-protein kinase that phosphorylates a large number of substrates containing acidic residues C-terminal to the phosphorylated serine or threonine (PubMed: 11239457 , PubMed: 16818610). Participates in Wnt signaling (By similarity).
Cellular Location	Nucleus.

Images



Please note: All products are 'FOR RESEARCH USE ONLY. NOT FOR USE IN DIAGNOSTIC OR THERAPEUTIC PROCEDURES'.