

CD105 Rabbit mAb

Catalog # AP76426

Product Information

Application	WB, IHC-P, IP
Primary Accession	P17813
Reactivity	Human
Host	Rabbit
Clonality	Monoclonal Antibody
Calculated MW	70578

Additional Information

Gene ID	2022
Other Names	ENG
Dilution	WB~~1/500-1/1000 IHC-P~~N/A IP~~N/A
Format	50mM Tris-Glycine(pH 7.4), 0.15M NaCl, 40%Glycerol, 0.01% sodium azide and 0.05% BSA.
Storage	Store at 4°C short term. Aliquot and store at -20°C long term. Avoid freeze/thaw cycles.

Protein Information

Name	ENG
Synonyms	END
Function	Vascular endothelium glycoprotein that plays an important role in the regulation of angiogenesis (PubMed: 21737454 , PubMed: 23300529). Required for normal structure and integrity of adult vasculature (PubMed: 7894484). Regulates the migration of vascular endothelial cells (PubMed: 17540773). Required for normal extraembryonic angiogenesis and for embryonic heart development (By similarity). May regulate endothelial cell shape changes in response to blood flow, which drive vascular remodeling and establishment of normal vascular morphology during angiogenesis (By similarity). May play a critical role in the binding of endothelial cells to integrins and/or other RGD receptors (PubMed: 1692830). Acts as a TGF-beta coreceptor and is involved in the TGF-beta/BMP signaling cascade that ultimately leads to the activation of SMAD transcription factors (PubMed: 21737454 , PubMed: 22347366 , PubMed: 23300529 , PubMed: 8370410). Required for GDF2/BMP9 signaling through SMAD1 in endothelial cells and modulates TGFβ1 signaling through SMAD3 (PubMed: 21737454 , PubMed: 22347366 , PubMed: 23300529).

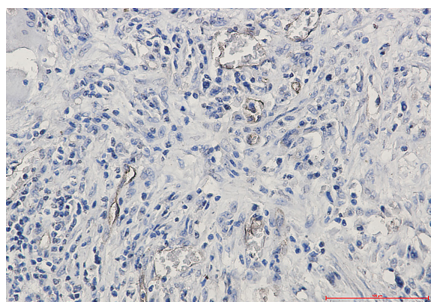
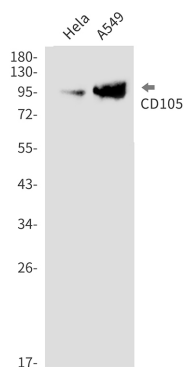
Cellular Location

Cell membrane; Single-pass type I membrane protein

Tissue Location

Detected on umbilical vein endothelial cells (PubMed:10625079). Detected in placenta (at protein level) (PubMed:1692830). Detected on endothelial cells (PubMed:1692830)

Images



Please note: All products are 'FOR RESEARCH USE ONLY. NOT FOR USE IN DIAGNOSTIC OR THERAPEUTIC PROCEDURES'.