

# CDC34 Rabbit mAb

Catalog # AP76432

## Product Information

---

Application	WB, IP
Primary Accession	<a href="#">P49427</a>
Reactivity	Human, Mouse, Rat
Host	Rabbit
Clonality	Monoclonal Antibody
Calculated MW	26737

## Additional Information

---

Gene ID	997
Other Names	CDC34
Dilution	WB~~1/500-1/1000 IP~~1/20
Format	50mM Tris-Glycine(pH 7.4), 0.15M NaCl, 40%Glycerol, 0.01% sodium azide and 0.05% BSA.
Storage	Store at 4°C short term. Aliquot and store at -20°C long term. Avoid freeze/thaw cycles.

## Protein Information

---

Name	CDC34
Synonyms	UBCH3, UBE2R1
Function	<p>E2 ubiquitin-conjugating enzyme that accepts ubiquitin from an E1 ubiquitin-activating protein, and catalyzes its covalent attachment to other proteins by an E3 ubiquitin-protein ligase complex (PubMed:<a href="#">10329681</a>, PubMed:<a href="#">17588522</a>, PubMed:<a href="#">20061386</a>, PubMed:<a href="#">38326650</a>). In vitro catalyzes 'Lys-48'-linked polyubiquitination (PubMed:<a href="#">22496338</a>). Cooperates with the E2 UBCH5C and the SCF(FBXW11) E3 ligase complex for the polyubiquitination of NFKBIA leading to its subsequent proteasomal degradation (PubMed:<a href="#">10329681</a>, PubMed:<a href="#">10918611</a>, PubMed:<a href="#">17698585</a>). Performs ubiquitin chain elongation building ubiquitin chains from the UBE2D3-primed NFKBIA-linked ubiquitin. UBE2D3 acts as an initiator E2, priming the phosphorylated NFKBIA target at positions 'Lys-21' and/or 'Lys-22' with a monoubiquitin. Cooperates with the SCF(SKP2) E3 ligase complex to regulate cell proliferation through ubiquitination and degradation of MYBL2 and KIP1 (PubMed:<a href="#">10871850</a>, PubMed:<a href="#">15652359</a>, PubMed:<a href="#">19112177</a>). Involved in ubiquitin conjugation and degradation of CREM isoform ICERIIgamma and ATF15 resulting in abrogation of ICERIIgamma- and ATF5-mediated repression</p>

of cAMP-induced transcription during both meiotic and mitotic cell cycles. Involved in the regulation of the cell cycle G2/M phase through its targeting of the WEE1 kinase for ubiquitination and degradation (PubMed:[19126550](#)). Also involved in the degradation of beta-catenin (PubMed:[12037680](#)). Is target of human herpes virus 1 protein ICP0, leading to ICP0-dependent dynamic interaction with proteasomes (PubMed:[11805320](#), PubMed:[12060736](#)).

#### Cellular Location

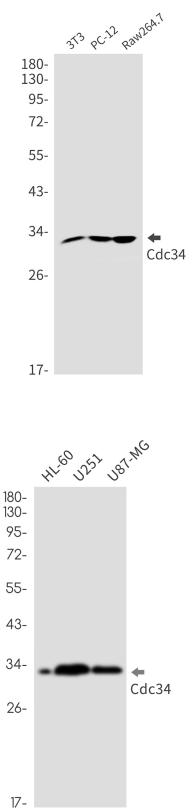
Cytoplasm. Nucleus. Note=The phosphorylation of the C-terminal tail plays an important role in mediating nuclear localization. Colocalizes with beta-tubulin on mitotic spindles in anaphase

#### Tissue Location

Expressed in testes during spermatogenesis to regulate repression of cAMP-induced transcription

## Images

---



Please note: All products are 'FOR RESEARCH USE ONLY. NOT FOR USE IN DIAGNOSTIC OR THERAPEUTIC PROCEDURES'.