

# CDC37 Rabbit mAb

Catalog # AP76434

## Product Information

---

<b>Application</b>	WB, IHC-P, IP
<b>Primary Accession</b>	<a href="#">Q16543</a>
<b>Reactivity</b>	Human
<b>Host</b>	Rabbit
<b>Clonality</b>	Monoclonal Antibody
<b>Calculated MW</b>	44468

## Additional Information

---

<b>Gene ID</b>	11140
<b>Other Names</b>	CDC37
<b>Dilution</b>	WB~~1/500-1/1000 IHC-P~~N/A IP~~N/A
<b>Format</b>	Liquid

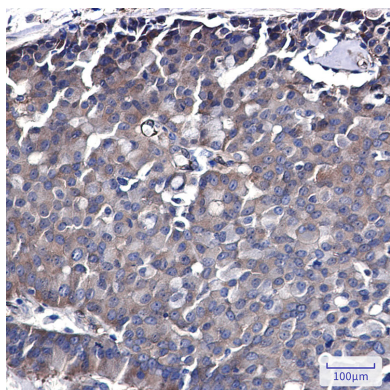
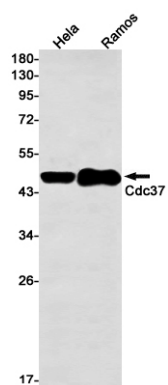
## Protein Information

---

<b>Name</b>	CDC37
<b>Synonyms</b>	CDC37A
<b>Function</b>	Co-chaperone that binds to numerous kinases and promotes their interaction with the Hsp90 complex, resulting in stabilization and promotion of their activity (PubMed: <a href="#">8666233</a> ). Inhibits HSP90AA1 ATPase activity (PubMed: <a href="#">23569206</a> ).
<b>Cellular Location</b>	Cytoplasm.

## Images

---



Please note: All products are 'FOR RESEARCH USE ONLY. NOT FOR USE IN DIAGNOSTIC OR THERAPEUTIC PROCEDURES'.