

# Cellubrevin Rabbit mAb

Catalog # AP76437

## Product Information

---

<b>Application</b>	WB, IP, ICC
<b>Primary Accession</b>	<a href="#">Q15836</a>
<b>Reactivity</b>	Human
<b>Host</b>	Rabbit
<b>Clonality</b>	Monoclonal Antibody
<b>Calculated MW</b>	11309

## Additional Information

---

<b>Gene ID</b>	9341
<b>Other Names</b>	VAMP3
<b>Dilution</b>	WB~~1/500-1/1000 IP~~N/A ICC~~N/A
<b>Format</b>	50mM Tris-Glycine(pH 7.4), 0.15M NaCl, 40%Glycerol, 0.01% sodium azide and 0.05% BSA.
<b>Storage</b>	Store at 4°C short term. Aliquot and store at -20°C long term. Avoid freeze/thaw cycles.

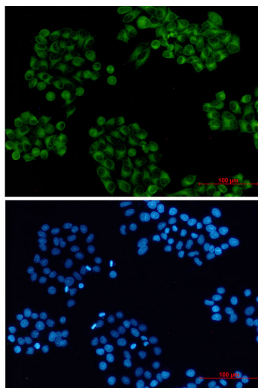
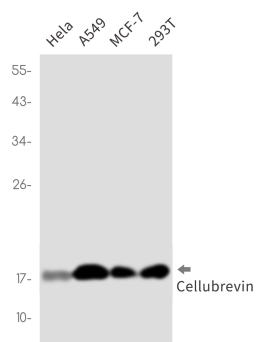
## Protein Information

---

<b>Name</b>	VAMP3
<b>Synonyms</b>	SYB3
<b>Function</b>	SNARE involved in vesicular transport from the late endosomes to the trans-Golgi network.
<b>Cellular Location</b>	Early endosome membrane; Single-pass type IV membrane protein. Recycling endosome membrane; Single-pass type IV membrane protein. Synapse, synaptosome

## Images

---



Please note: All products are 'FOR RESEARCH USE ONLY. NOT FOR USE IN DIAGNOSTIC OR THERAPEUTIC PROCEDURES'.