

CLIC1 Rabbit mAb

Catalog # AP76442

Product Information

Application	WB, IP, ICC
Primary Accession	O00299
Reactivity	Human, Mouse, Rat, Hamster
Host	Rabbit
Clonality	Monoclonal Antibody
Calculated MW	26923

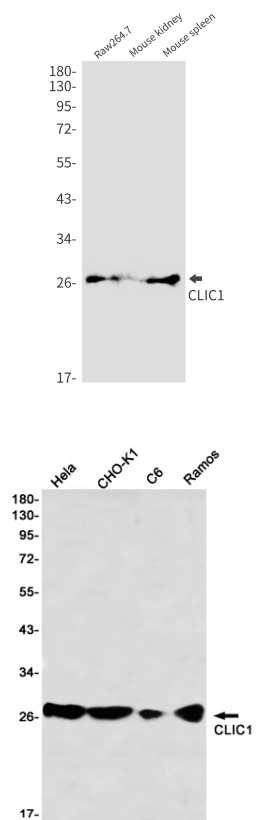
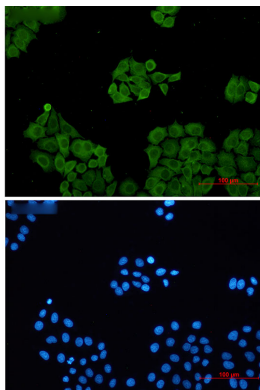
Additional Information

Gene ID	1192
Other Names	CLIC1
Dilution	WB~~1/500-1/1000 IP~~1/20 ICC~~N/A
Format	Liquid

Protein Information

Name	CLIC1 {ECO:0000303 PubMed:16339885, ECO:0000312 HGNC:HGNC:2062}
Function	In the soluble state, catalyzes glutaredoxin-like thiol disulfide exchange reactions with reduced glutathione as electron donor. Reduces selenite and dehydroascorbate and may act as an antioxidant during oxidative stress response (PubMed: 25581026 , PubMed: 37759794). Can insert into membranes and form voltage-dependent multi-ion conductive channels. Membrane insertion seems to be redox- regulated and may occur only under oxidizing conditions. Involved in regulation of the cell cycle.
Cellular Location	Nucleus. Nucleus membrane; Single-pass membrane protein. Cytoplasm. Cell membrane; Single-pass membrane protein. Endoplasmic reticulum {ECO:0000250 UniProtKB:Q6MG61}. Note=Mostly in the nucleus including in the nuclear membrane (PubMed:12681486, PubMed:9139710). Small amount in the cytoplasm and the plasma membrane (PubMed:9139710). Exists both as soluble cytoplasmic protein and as membrane protein with probably a single transmembrane domain (PubMed:11551966, PubMed:11940526, PubMed:12681486, PubMed:14613939, PubMed:9139710). Might not be present in the nucleus of cardiac cells (By similarity) {ECO:0000250 UniProtKB:Q6MG61, ECO:0000269 PubMed:11551966, ECO:0000269 PubMed:11940526, ECO:0000269 PubMed:12681486, ECO:0000269 PubMed:14613939, ECO:0000269 PubMed:9139710}
Tissue Location	Expression is prominent in heart, placenta, liver, kidney and pancreas.

Images



Please note: All products are 'FOR RESEARCH USE ONLY. NOT FOR USE IN DIAGNOSTIC OR THERAPEUTIC PROCEDURES'.