

CLIP170 Rabbit mAb

Catalog # AP76443

Product Information

Application	WB, IHC-P
Primary Accession	P30622
Reactivity	Human
Host	Rabbit
Clonality	Monoclonal Antibody
Isotype	IgG
Conjugate	Unconjugated
Purification	Affinity Purified
Calculated MW	162246

Additional Information

Gene ID	6249
Other Names	CLIP1
Dilution	WB~~1:1000-1:5000 IHC-P~~N/A
Format	Liquid in 50mM Tris-Glycine(pH 7.4), 0.15M NaCl, 40%Glycerol, 0.01% sodium azide and 0.05% BSA.
Storage	Store at 4°C short term. Aliquot and store at -20°C long term. Avoid freeze/thaw cycles.

Protein Information

Name	CLIP1
Synonyms	CYLN1, RSN
Function	Binds to the plus end of microtubules and regulates the dynamics of the microtubule cytoskeleton. Promotes microtubule growth and microtubule bundling. Links cytoplasmic vesicles to microtubules and thereby plays an important role in intracellular vesicle trafficking. Plays a role macropinocytosis and endosome trafficking.
Cellular Location	Cytoplasm. Cytoplasm, cytoskeleton. Cytoplasmic vesicle membrane; Peripheral membrane protein; Cytoplasmic side. Cell projection, ruffle. Note=Localizes to microtubule plus ends (PubMed:17889670, PubMed:21646404). Localizes preferentially to the ends of tyrosinated microtubules (By similarity). Accumulates in plasma membrane regions with ruffling and protrusions. Associates with the membranes of intermediate macropinocytic vesicles (PubMed:12433698)

{ECO:0000250|UniProtKB:Q922J3, ECO:0000269|PubMed:12433698, ECO:0000269|PubMed:17889670, ECO:0000269|PubMed:21646404}

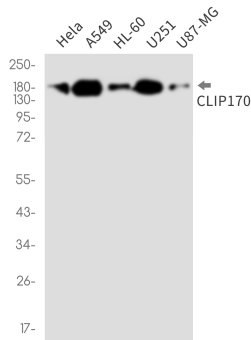
Tissue Location

Detected in dendritic cells (at protein level). Highly expressed in the Reed-Sternberg cells of Hodgkin disease

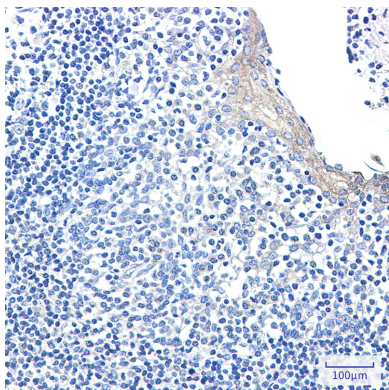
Background

The protein encoded by this gene links endocytic vesicles to microtubules. This gene is highly expressed in Reed-Sternberg cells of Hodgkin disease. Several transcript variants encoding different isoforms have been found for this gene.

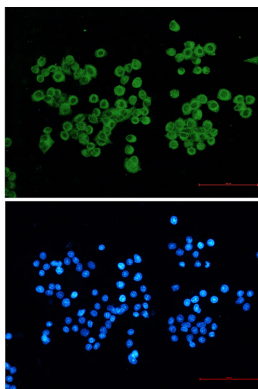
Images



Western blot analysis of CLIP170 in HeLa, A549, HL-60, U251, U87-MG lysates using CLIP170 antibody.



Immunohistochemistry analysis of paraffin-embedded Human tonsil using CLIP170 antibody. High-pressure and temperature Sodium Citrate pH 6.0 was used for antigen retrieval.



Immunocytochemistry analysis of CLIP17 (green) in HeLa cells using CLIP170 antibody and DAPI (blue).

Please note: All products are 'FOR RESEARCH USE ONLY. NOT FOR USE IN DIAGNOSTIC OR THERAPEUTIC PROCEDURES'.