

CSDE1 Rabbit mAb

Catalog # AP76450

Product Information

Application	WB, IHC-P, IHC-F, IP, ICC
Primary Accession	O75534
Reactivity	Human
Host	Rabbit
Clonality	Monoclonal Antibody
Calculated MW	88885

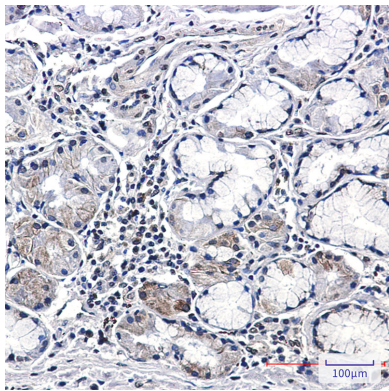
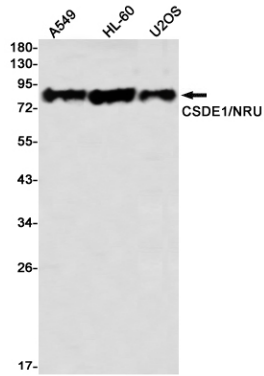
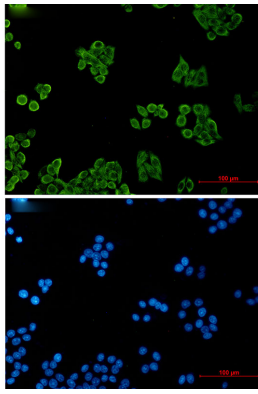
Additional Information

Gene ID	7812
Other Names	CSDE1
Dilution	WB~~1/500-1/1000 IHC-P~~N/A IHC-F~~N/A IP~~N/A ICC~~N/A
Format	50mM Tris-Glycine(pH 7.4), 0.15M NaCl, 40%Glycerol, 0.01% sodium azide and 0.05% BSA.
Storage	Store at 4°C short term. Aliquot and store at -20°C long term. Avoid freeze/thaw cycles.

Protein Information

Name	CSDE1 (HGNC:29905)
Function	RNA-binding protein involved in translationally coupled mRNA turnover (PubMed: 11051545 , PubMed: 15314026). Implicated with other RNA- binding proteins in the cytoplasmic deadenylation/translational and decay interplay of the FOS mRNA mediated by the major coding-region determinant of instability (mCRD) domain (PubMed: 11051545 , PubMed: 15314026). Required for efficient formation of stress granules (PubMed: 29395067).
Cellular Location	Cytoplasm. Cytoplasm, Stress granule. Cytoplasm, P-body

Images



Please note: All products are 'FOR RESEARCH USE ONLY. NOT FOR USE IN DIAGNOSTIC OR THERAPEUTIC PROCEDURES'.