

# FGFR1 Oncogene Partner Rabbit mAb

Catalog # AP76497

## Product Information

---

<b>Application</b>	WB, IP, ICC
<b>Primary Accession</b>	<a href="#">O95684</a>
<b>Reactivity</b>	Human, Mouse, Rat
<b>Host</b>	Rabbit
<b>Clonality</b>	Monoclonal Antibody
<b>Calculated MW</b>	43065

## Additional Information

---

<b>Gene ID</b>	11116
<b>Other Names</b>	CEP43
<b>Dilution</b>	WB~~1/500-1/1000 IP~~1/20 ICC~~N/A
<b>Format</b>	Liquid

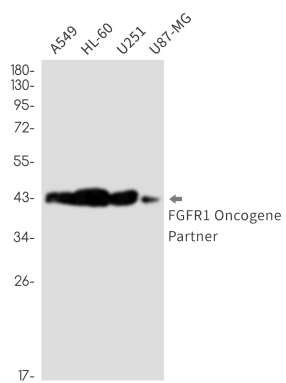
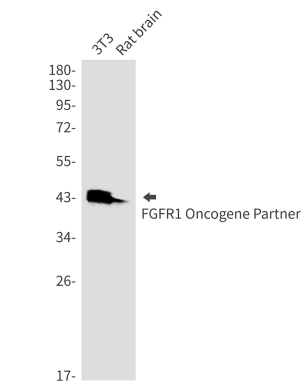
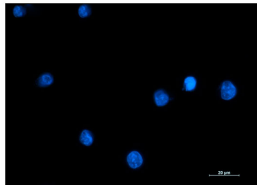
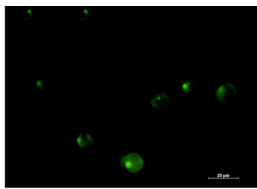
## Protein Information

---

<b>Name</b>	CEP43 ( <a href="#">HGNC:17012</a> )
<b>Synonyms</b>	FGFR1OP, FOP
<b>Function</b>	Required for anchoring microtubules to the centrosomes (PubMed: <a href="#">16314388</a> , PubMed: <a href="#">28659385</a> ). Required for ciliation (PubMed: <a href="#">28625565</a> , PubMed: <a href="#">28659385</a> ).
<b>Cellular Location</b>	Cytoplasm, cytoskeleton, microtubule organizing center, centrosome. Cytoplasm, cytoskeleton, microtubule organizing center, centrosome, centriole. Cytoplasm, cytoskeleton, cilium basal body. Note=Associated with gamma-tubulin (PubMed: <a href="#">16314388</a> ). Localizes on both mother and daughter centrioles (PubMed: <a href="#">28428259</a> , PubMed: <a href="#">28625565</a> ). Localizes to an axial position on the mother centriole (PubMed: <a href="#">28625565</a> ). Localizes to the distal end of the centriole partly on the subdistal appendage region (PubMed: <a href="#">28659385</a> ).
<b>Tissue Location</b>	Ubiquitous. Highly expressed in heart, liver, muscle, kidney, intestine, colon, adrenal gland, prostate, testis, and pancreas.

## Images

---



Please note: All products are 'FOR RESEARCH USE ONLY. NOT FOR USE IN DIAGNOSTIC OR THERAPEUTIC PROCEDURES'.