

gamma Catenin Rabbit mAb

Catalog # AP76506

Product Information

Application	WB, IHC-P, IHC-F, ICC
Primary Accession	P14923
Reactivity	Human
Host	Rabbit
Clonality	Monoclonal Antibody
Calculated MW	81745

Additional Information

Gene ID	3728
Other Names	JUP
Dilution	WB~~1/500-1/1000 IHC-P~~N/A IHC-F~~N/A ICC~~N/A
Format	50mM Tris-Glycine(pH 7.4), 0.15M NaCl, 40%Glycerol, 0.01% sodium azide and 0.05% BSA.
Storage	Store at 4°C short term. Aliquot and store at -20°C long term. Avoid freeze/thaw cycles.

Protein Information

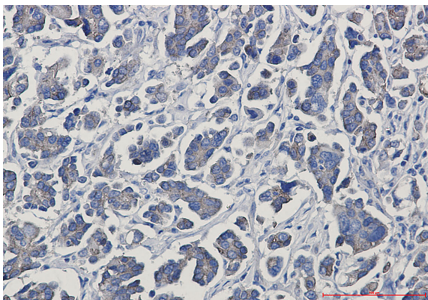
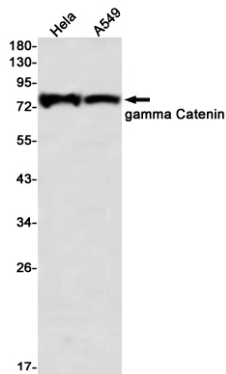
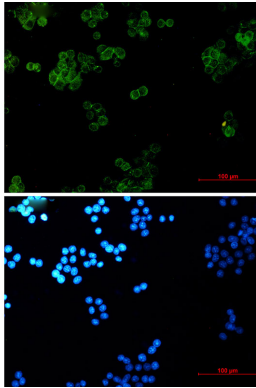
Name	JUP (HGNC:6207)
Function	Common junctional plaque protein. The membrane-associated plaques are architectural elements in an important strategic position to influence the arrangement and function of both the cytoskeleton and the cells within the tissue. The presence of plakoglobin in both the desmosomes and in the intermediate junctions suggests that it plays a central role in the structure and function of submembranous plaques. Acts as a substrate for VE-PTP and is required by it to stimulate VE- cadherin function in endothelial cells. Can replace beta-catenin in E- cadherin/catenin adhesion complexes which are proposed to couple cadherins to the actin cytoskeleton (By similarity). May promote axon outgrowth and motor fiber repair via DSP-mediated recruitment to outgrowth tips (By similarity).
Cellular Location	Cell junction, adherens junction. Cell junction, desmosome. Cytoplasm, cytoskeleton. Cell membrane; Peripheral membrane protein. Cytoplasm {ECO:0000250 UniProtKB:Q9PVF7}. Cell junction {ECO:0000250 UniProtKB:Q9PVF7}. Nucleus {ECO:0000250 UniProtKB:Q9PVF7} Cell projection, axon {ECO:0000250 UniProtKB:Q02257}. Note=Cytoplasmic in a soluble and

membrane-associated form. Colocalizes with DSG4 at desmosomes (PubMed:21495994).

Tissue Location

Expressed in cardiomyocytes in the heart (at protein level).

Images



Please note: All products are 'FOR RESEARCH USE ONLY. NOT FOR USE IN DIAGNOSTIC OR THERAPEUTIC PROCEDURES'.