

HKDC1 Rabbit mAb

Catalog # AP76533

Product Information

| | |
|-------------------|------------------------|
| Application | WB, IP |
| Primary Accession | Q2TB90 |
| Reactivity | Human |
| Host | Rabbit |
| Clonality | Monoclonal Antibody |
| Calculated MW | 102545 |

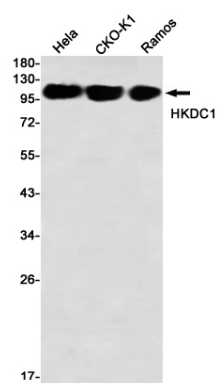
Additional Information

| | |
|-------------|--------------------------|
| Gene ID | 80201 |
| Other Names | HKDC1 |
| Dilution | WB~~1/500-1/1000 IP~~N/A |
| Format | Liquid |

Protein Information

| | |
|-------------------|---|
| Name | HKDC1 (HGNC:23302) |
| Function | Catalyzes the phosphorylation of hexose to hexose 6- phosphate, although at very low level compared to other hexokinases (PubMed: 30517626). Has low glucose phosphorylating activity compared to other hexokinases (PubMed: 30517626). Involved in glucose homeostasis and hepatic lipid accumulation. Required to maintain whole-body glucose homeostasis during pregnancy; however additional evidences are required to confirm this role (By similarity). |
| Cellular Location | Cytoplasm. Mitochondrion membrane; Peripheral membrane protein. Photoreceptor inner segment {ECO:0000250 UniProtKB:Q91W97}. Note=The mitochondrial-binding peptide (MBP) region promotes association with the mitochondrion |
| Tissue Location | Widely expressed (PubMed:27459389, PubMed:29401404). Highly expressed in the brush border, surface epithelium and the myenteric plexus of the small and large intestines; the acinar centrocytes and interlobular ducts of the pancreas; and the alveolar macrophages in the lungs (at protein level) (PubMed:29401404) Present at moderate level in the thyroid follicular epithelium (at protein level) (PubMed:29401404). |

Images



Please note: All products are 'FOR RESEARCH USE ONLY. NOT FOR USE IN DIAGNOSTIC OR THERAPEUTIC PROCEDURES'.