

# HspA14 Rabbit mAb

Catalog # AP76540

## Product Information

---

<b>Application</b>	WB, IP, ICC
<b>Primary Accession</b>	<a href="#">Q0VDF9</a>
<b>Reactivity</b>	Human
<b>Host</b>	Rabbit
<b>Clonality</b>	Monoclonal Antibody
<b>Calculated MW</b>	54794

## Additional Information

---

<b>Gene ID</b>	51182
<b>Other Names</b>	HSPA14
<b>Dilution</b>	WB~~1/500-1/1000 IP~~1/20 ICC~~N/A
<b>Format</b>	50mM Tris-Glycine(pH 7.4), 0.15M NaCl, 40%Glycerol, 0.01% sodium azide and 0.05% BSA.
<b>Storage</b>	Store at 4°C short term. Aliquot and store at -20°C long term. Avoid freeze/thaw cycles.

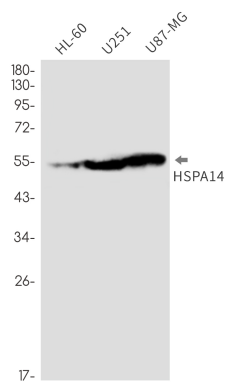
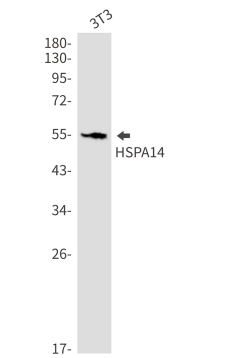
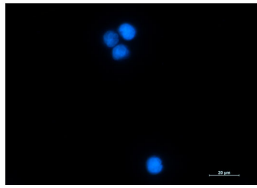
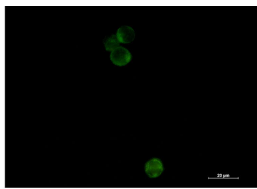
## Protein Information

---

<b>Name</b>	HSPA14
<b>Synonyms</b>	HSP60, HSP70L1
<b>Function</b>	Component of the ribosome-associated complex (RAC), a complex involved in folding or maintaining nascent polypeptides in a folding- competent state. In the RAC complex, binds to the nascent polypeptide chain, while DNAJC2 stimulates its ATPase activity.
<b>Cellular Location</b>	Cytoplasm, cytosol.

## Images

---



Please note: All products are 'FOR RESEARCH USE ONLY. NOT FOR USE IN DIAGNOSTIC OR THERAPEUTIC PROCEDURES'.