

ING1 Rabbit mAb

Catalog # AP76552

Product Information

Application	WB
Primary Accession	Q9UK53
Reactivity	Human, Mouse, Rat
Host	Rabbit
Clonality	Monoclonal Antibody
Calculated MW	46738

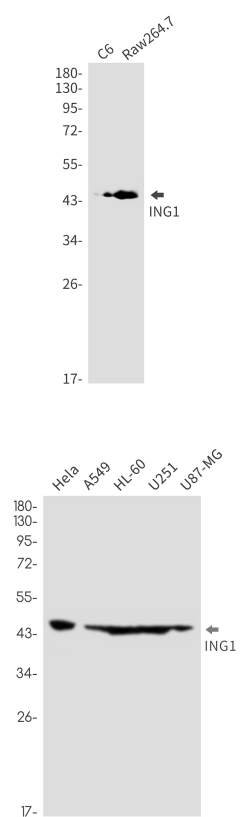
Additional Information

Gene ID	3621
Other Names	ING1
Dilution	WB~~1/500-1/1000
Format	50mM Tris-Glycine(pH 7.4), 0.15M NaCl, 40%Glycerol, 0.01% sodium azide and 0.05% BSA.
Storage	Store at 4°C short term. Aliquot and store at -20°C long term. Avoid freeze/thaw cycles.

Protein Information

Name	ING1
Function	Cooperates with p53/TP53 in the negative regulatory pathway of cell growth by modulating p53-dependent transcriptional activation. Implicated as a tumor suppressor gene.
Cellular Location	Nucleus.
Tissue Location	Isoform 2 was expressed in all normal tissues and cells examined, as well as in all breast cancer and melanoma cell lines examined. Isoform 3 was expressed in testis, liver, and kidney, weakly expressed in colon and brain and not expressed in breast and cultured melanocytes. Isoform 4 was highly expressed in testis and weakly expressed in brain, but not expressed in breast, colon, kidney, melanocytes, breast cancer or melanoma cell lines

Images



Please note: All products are 'FOR RESEARCH USE ONLY. NOT FOR USE IN DIAGNOSTIC OR THERAPEUTIC PROCEDURES'.