

Insulin Degrading Enzyme Rabbit mAb

Catalog # AP76553

Product Information

Application	WB, ICC
Primary Accession	P14735
Reactivity	Human
Host	Rabbit
Clonality	Monoclonal Antibody
Calculated MW	117968

Additional Information

Gene ID	3416
Other Names	IDE
Dilution	WB~~1/500-1/1000 ICC~~N/A
Format	Liquid

Protein Information

Name	IDE {ECO:0000303 PubMed:20364150, ECO:0000312 HGNC:HGNC:5381}
Function	<p>Plays a role in the cellular breakdown of insulin, APP peptides, IAPP peptides, natriuretic peptides, glucagon, bradykinin, kallidin, and other peptides, and thereby plays a role in intercellular peptide signaling (PubMed:10684867, PubMed:17051221, PubMed:17613531, PubMed:18986166, PubMed:19321446, PubMed:21098034, PubMed:2293021, PubMed:23922390, PubMed:24847884, PubMed:26394692, PubMed:26968463, PubMed:29596046). Substrate binding induces important conformation changes, making it possible to bind and degrade larger substrates, such as insulin (PubMed:23922390, PubMed:26394692, PubMed:29596046). Contributes to the regulation of peptide hormone signaling cascades and regulation of blood glucose homeostasis via its role in the degradation of insulin, glucagon and IAPP (By similarity). Plays a role in the degradation and clearance of APP-derived amyloidogenic peptides that are secreted by neurons and microglia (Probable) (PubMed:26394692, PubMed:9830016). Degrades the natriuretic peptides ANP, BNP and CNP, inactivating their ability to raise intracellular cGMP (PubMed:21098034). Also degrades an aberrant frameshifted 40-residue form of NPPA (fsNPPA) which is associated with familial atrial fibrillation in heterozygous patients (PubMed:21098034). Involved in antigen processing. Produces both the N terminus and the C terminus of MAGEA3-derived antigenic peptide (EVDPIGHLV) that is presented to cytotoxic T lymphocytes by MHC class I.</p>

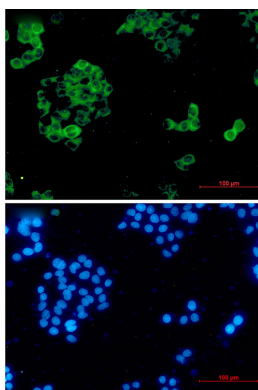
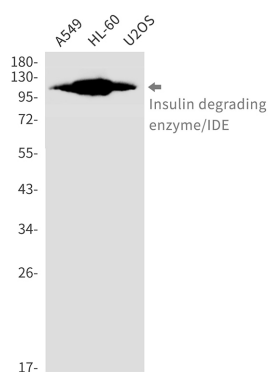
Cellular Location

Cytoplasm, cytosol. Cell membrane {ECO:0000250|UniProtKB:P35559}.
Secreted Note=Present at the cell surface of neuron cells. The membrane-associated isoform is approximately 5 kDa larger than the known cytosolic isoform

Tissue Location

Detected in brain and in cerebrospinal fluid (at protein level).

Images



Please note: All products are 'FOR RESEARCH USE ONLY. NOT FOR USE IN DIAGNOSTIC OR THERAPEUTIC PROCEDURES'.