

# KLF4 Rabbit mAb

Catalog # AP76561

## Product Information

---

Application	WB, IHC-P, IP
Primary Accession	<a href="#">Q60793</a>
Reactivity	Human, Mouse, Hamster
Host	Rabbit
Clonality	Monoclonal Antibody
Calculated MW	51880

## Additional Information

---

Gene ID	16600
Other Names	Klf4
Dilution	WB~~1/500-1/1000 IHC-P~~N/A IP~~N/A
Format	50mM Tris-Glycine(pH 7.4), 0.15M NaCl, 40%Glycerol, 0.01% sodium azide and 0.05% BSA.
Storage	Store at 4°C short term. Aliquot and store at -20°C long term. Avoid freeze/thaw cycles.

## Protein Information

---

Name	Klf4
Synonyms	Ezf, Gklf, Zie
Function	<p>Transcription factor; can act both as activator and as repressor. Binds the 5'-CACCC-3' core sequence (PubMed:<a href="#">10431239</a>, PubMed:<a href="#">10556311</a>, PubMed:<a href="#">15358627</a>, PubMed:<a href="#">16954384</a>, PubMed:<a href="#">17060454</a>, PubMed:<a href="#">19816951</a>, PubMed:<a href="#">20071344</a>, PubMed:<a href="#">29593216</a>, PubMed:<a href="#">39986490</a>). Binds to the promoter region of its own gene and can activate its own transcription (PubMed:<a href="#">10431239</a>, PubMed:<a href="#">10556311</a>, PubMed:<a href="#">15358627</a>, PubMed:<a href="#">16954384</a>, PubMed:<a href="#">17060454</a>, PubMed:<a href="#">19816951</a>, PubMed:<a href="#">20071344</a>, PubMed:<a href="#">29593216</a>). Regulates the expression of key transcription factors during embryonic development (PubMed:<a href="#">10431239</a>, PubMed:<a href="#">10556311</a>, PubMed:<a href="#">15358627</a>, PubMed:<a href="#">16954384</a>, PubMed:<a href="#">17060454</a>, PubMed:<a href="#">19816951</a>, PubMed:<a href="#">20071344</a>, PubMed:<a href="#">29593216</a>). Plays an important role in maintaining embryonic stem cells, and in preventing their differentiation (PubMed:<a href="#">10431239</a>, PubMed:<a href="#">10556311</a>, PubMed:<a href="#">15358627</a>, PubMed:<a href="#">16954384</a>, PubMed:<a href="#">17060454</a>, PubMed:<a href="#">19816951</a>, PubMed:<a href="#">20071344</a>, PubMed:<a href="#">29593216</a>). Required for establishing the barrier</p>

function of the skin and for postnatal maturation and maintenance of the ocular surface. Involved in the differentiation of epithelial cells and may also function in skeletal and kidney development. Contributes to the down-regulation of p53/TP53 transcription (By similarity).

**Cellular Location**

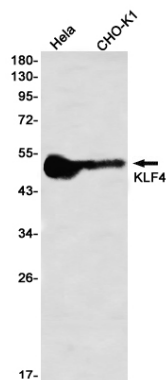
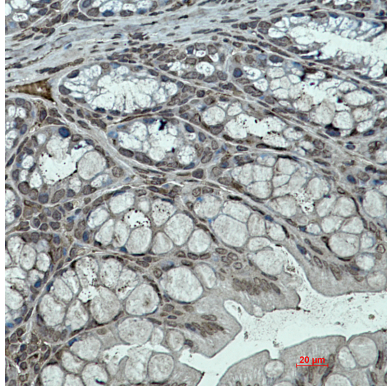
Nucleus. Cytoplasm

**Tissue Location**

Highest expression in the colon. Lower levels in testis, lung and small intestine

## Images

---



Please note: All products are 'FOR RESEARCH USE ONLY. NOT FOR USE IN DIAGNOSTIC OR THERAPEUTIC PROCEDURES'.