

# alpha Skeletal Muscle Actin Rabbit mAb

Catalog # AP76605

## Product Information

---

<b>Application</b>	WB, IHC-P, IHC-F, IP, ICC
<b>Primary Accession</b>	<a href="#">P68133</a>
<b>Reactivity</b>	Human, Rat, Hamster
<b>Host</b>	Rabbit
<b>Clonality</b>	Monoclonal Antibody
<b>Calculated MW</b>	42051

## Additional Information

---

<b>Gene ID</b>	58
<b>Other Names</b>	ACTA1
<b>Dilution</b>	WB~~1/500-1/1000 IHC-P~~N/A IHC-F~~N/A IP~~N/A ICC~~N/A
<b>Format</b>	Liquid

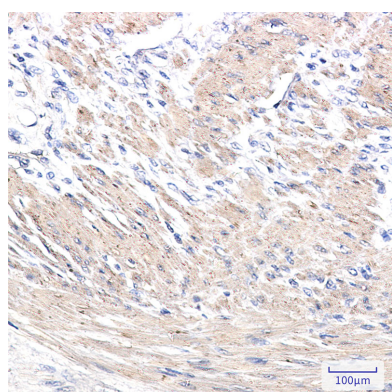
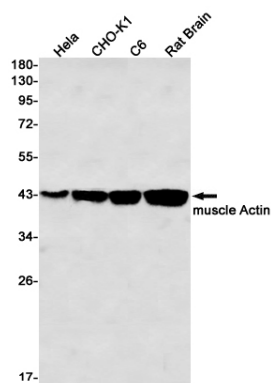
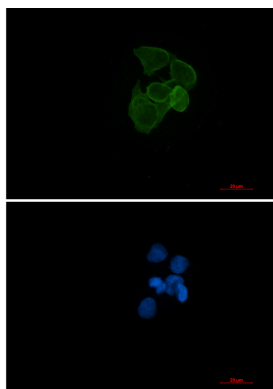
## Protein Information

---

<b>Name</b>	ACTA1
<b>Synonyms</b>	ACTA
<b>Function</b>	Actins are highly conserved proteins that are involved in various types of cell motility and are ubiquitously expressed in all eukaryotic cells.
<b>Cellular Location</b>	Cytoplasm, cytoskeleton.

## Images

---



Please note: All products are 'FOR RESEARCH USE ONLY. NOT FOR USE IN DIAGNOSTIC OR THERAPEUTIC PROCEDURES'.