

# NDUFS2 Rabbit mAb

Catalog # AP76609

## Product Information

---

Application	WB, IHC-P, IP
Primary Accession	<a href="#">O75306</a>
Reactivity	Human
Host	Rabbit
Clonality	Monoclonal Antibody
Calculated MW	52546

## Additional Information

---

Gene ID	4720
Other Names	NDUFS2
Dilution	WB~~1/500-1/1000 IHC-P~~N/A IP~~N/A
Format	Liquid

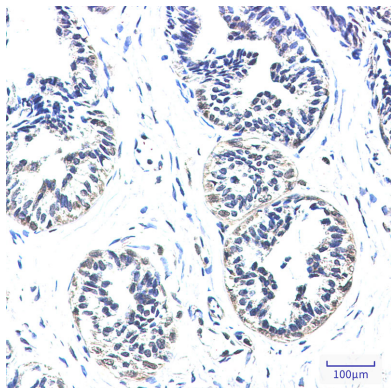
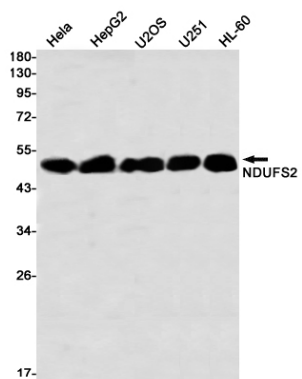
## Protein Information

---

Name	NDUFS2
Function	<p>Core subunit of the mitochondrial membrane respiratory chain NADH dehydrogenase (Complex I) which catalyzes electron transfer from NADH through the respiratory chain, using ubiquinone as an electron acceptor (PubMed:<a href="#">22036843</a>, PubMed:<a href="#">28031252</a>, PubMed:<a href="#">30922174</a>). Essential for the catalytic activity of complex I (PubMed:<a href="#">22036843</a>, PubMed:<a href="#">30922174</a>). Essential for the assembly of complex I (By similarity). Redox-sensitive, critical component of the oxygen-sensing pathway in the pulmonary vasculature which plays a key role in acute pulmonary oxygen-sensing and hypoxic pulmonary vasoconstriction (PubMed:<a href="#">30922174</a>). Plays an important role in carotid body sensing of hypoxia (By similarity). Essential for glia-like neural stem and progenitor cell proliferation, differentiation and subsequent oligodendrocyte or neuronal maturation (By similarity).</p>
Cellular Location	<p>Mitochondrion inner membrane; Peripheral membrane protein {ECO:0000250 UniProtKB:Q641Y2}; Matrix side {ECO:0000250 UniProtKB:Q641Y2}</p>

## Images

---



Please note: All products are 'FOR RESEARCH USE ONLY. NOT FOR USE IN DIAGNOSTIC OR THERAPEUTIC PROCEDURES'.