

NME2 Rabbit mAb

Catalog # AP76619

Product Information

Application	WB, IHC-P
Primary Accession	P22392
Reactivity	Human, Mouse, Rat
Host	Rabbit
Clonality	Monoclonal Antibody
Calculated MW	17298

Additional Information

Gene ID	4831
Other Names	NME2
Dilution	WB~~1/500-1/1000 IHC-P~~N/A
Format	Liquid

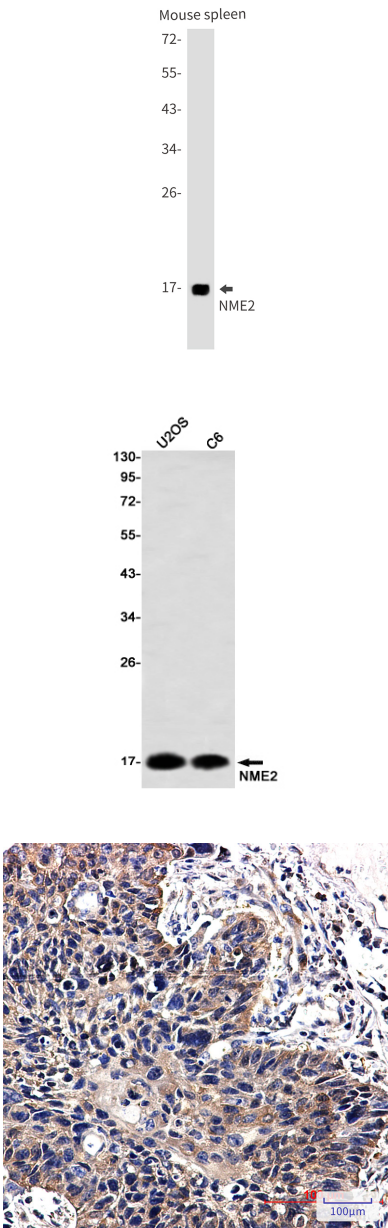
Protein Information

Name	NME2
Synonyms	NM23B
Function	<p>Major role in the synthesis of nucleoside triphosphates other than ATP. The ATP gamma phosphate is transferred to the NDP beta phosphate via a ping-pong mechanism, using a phosphorylated active-site intermediate (By similarity). Negatively regulates Rho activity by interacting with AKAP13/LBC (PubMed:15249197). Acts as a transcriptional activator of the MYC gene; binds DNA non-specifically (PubMed:19435876, PubMed:8392752). Binds to both single-stranded guanine- and cytosine-rich strands within the nuclease hypersensitive element (NHE) III(1) region of the MYC gene promoter. Does not bind to duplex NHE III(1) (PubMed:19435876). Has G-quadruplex (G4) DNA-binding activity, which is independent of its nucleotide-binding and kinase activity. Binds both folded and unfolded G4 with similar low nanomolar affinities. Stabilizes folded G4s regardless of whether they are prefolded or not (PubMed:25679041). Exhibits histidine protein kinase activity (PubMed:20946858).</p>
Cellular Location	<p>Cytoplasm. Cell projection, lamellipodium. Cell projection, ruffle. Note=Colocalizes with ITGB1 and ITGB1BP1 at the edge or peripheral ruffles and lamellipodia during the early stages of cell spreading on fibronectin or collagen but not on vitronectin or laminin substrates [Isoform 3]: Cytoplasm. Cytoplasm, perinuclear region. Nucleus</p>

Tissue Location

[Isoform 1]: Ubiquitously expressed.

Images



Please note: All products are 'FOR RESEARCH USE ONLY. NOT FOR USE IN DIAGNOSTIC OR THERAPEUTIC PROCEDURES'.