

# MYH9 Rabbit mAb

Catalog # AP76621

## Product Information

---

Application	WB, IHC-P, IP
Primary Accession	<a href="#">P35579</a>
Reactivity	Human, Rat
Host	Rabbit
Clonality	Monoclonal Antibody
Calculated MW	226532

## Additional Information

---

Gene ID	4627
Other Names	MYH9
Dilution	WB~~1/500-1/1000 IHC-P~~N/A IP~~N/A
Format	Liquid

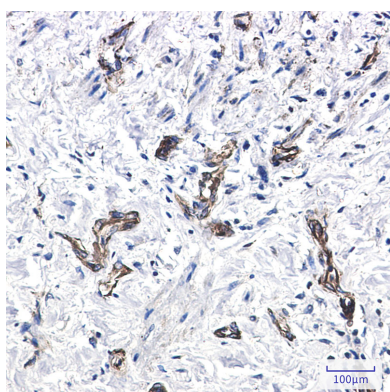
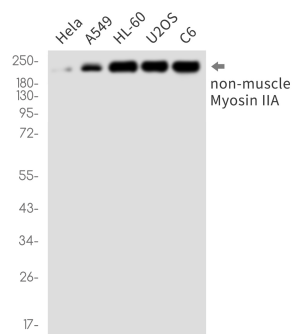
## Protein Information

---

Name	MYH9
Function	Cellular myosin that appears to play a role in cytokinesis, cell shape, and specialized functions such as secretion and capping. Required for cortical actin clearance prior to oocyte exocytosis (By similarity). Promotes cell motility in conjunction with S100A4 (PubMed: <a href="#">16707441</a> ). During cell spreading, plays an important role in cytoskeleton reorganization, focal contact formation (in the margins but not the central part of spreading cells), and lamellipodial retraction; this function is mechanically antagonized by MYH10 (PubMed: <a href="#">20052411</a> ).
Cellular Location	Cytoplasm, cytoskeleton. Cytoplasm, cell cortex {ECO:0000250 UniProtKB:Q8VDD5}. Cytoplasmic vesicle, secretory vesicle, Cortical granule {ECO:0000250 UniProtKB:Q8VDD5}. Cell membrane Note=Colocalizes with actin filaments at lamellipodia margins and at the leading edge of migrating cells (PubMed:20052411). In retinal pigment epithelial cells, predominantly localized to stress fiber-like structures with some localization to cytoplasmic puncta (PubMed:27331610).
Tissue Location	In the kidney, expressed in the glomeruli. Also expressed in leukocytes.

## Images

---



Please note: All products are 'FOR RESEARCH USE ONLY. NOT FOR USE IN DIAGNOSTIC OR THERAPEUTIC PROCEDURES'.