

# NUP50 Rabbit mAb

Catalog # AP76630

## Product Information

---

Application	WB, ICC
Primary Accession	<a href="#">Q9UKX7</a>
Reactivity	Human, Rat
Host	Rabbit
Clonality	Monoclonal Antibody
Calculated MW	50144

## Additional Information

---

Gene ID	10762
Other Names	NUP50
Dilution	WB~~1/500-1/1000 ICC~~N/A
Format	Liquid

## Protein Information

---

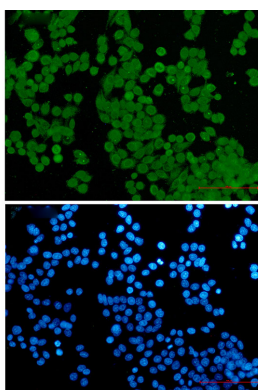
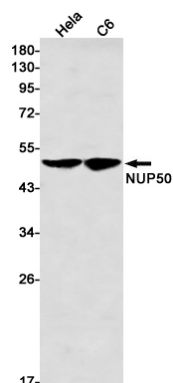
Name	NUP50
Synonyms	NPAP60L
Function	Component of the nuclear pore complex that has a direct role in nuclear protein import (PubMed: <a href="#">20016008</a> ). Actively displaces NLSs from importin-alpha, and facilitates disassembly of the importin- alpha:beta-cargo complex and importin recycling (PubMed: <a href="#">20016008</a> ). Interacts with regulatory proteins of cell cycle progression including CDKN1B (By similarity). This interaction is required for correct intracellular transport and degradation of CDKN1B (By similarity).
Cellular Location	Nucleus, nuclear pore complex. Nucleus membrane {ECO:0000250 UniProtKB:O08587}; Peripheral membrane protein {ECO:0000250 UniProtKB:O08587}; Nucleoplasmic side {ECO:0000250 UniProtKB:O08587}. Note=Localizes to the nucleoplasmic fibrils of the nuclear pore complex (By similarity). Dissociates from the NPC structure early during prophase of mitosis (PubMed:12802065) Associates with the newly formed nuclear membrane during telophase (PubMed:12802065). In the testis, the localization changes during germ cell differentiation from the nuclear surface in spermatocytes to the whole nucleus (interior) in spermatids and back to the nuclear surface in spermatozoa (By similarity). {ECO:0000250 UniProtKB:O08587, ECO:0000269 PubMed:12802065}

## Tissue Location

Ubiquitous. Highest levels in testis, peripheral blood leukocytes and fetal liver

## Images

---



Please note: All products are 'FOR RESEARCH USE ONLY. NOT FOR USE IN DIAGNOSTIC OR THERAPEUTIC PROCEDURES'.