

# OTX1 Rabbit mAb

Catalog # AP76636

## Product Information

---

<b>Application</b>	WB
<b>Primary Accession</b>	<a href="#">P32242</a>
<b>Reactivity</b>	Human, Mouse, Rat
<b>Host</b>	Rabbit
<b>Clonality</b>	Monoclonal Antibody
<b>Calculated MW</b>	37327

## Additional Information

---

<b>Gene ID</b>	5013
<b>Other Names</b>	OTX1
<b>Dilution</b>	WB~~1/500-1/1000
<b>Format</b>	Liquid

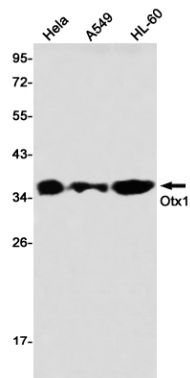
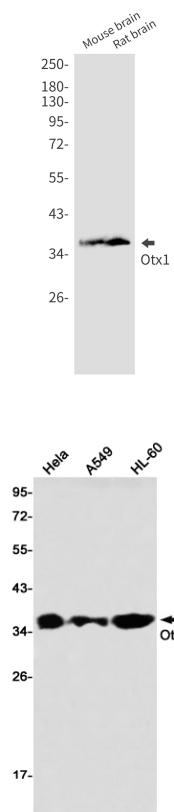
## Protein Information

---

<b>Name</b>	OTX1
<b>Function</b>	Probably plays a role in the development of the brain and the sense organs. Can bind to the BCD target sequence (BTS): 5'-TCTAATCCC- 3'.
<b>Cellular Location</b>	Nucleus.
<b>Tissue Location</b>	Expressed in brain. Detected in the anterior part of the neural fetal retina (at protein level)

## Images

---



Please note: All products are 'FOR RESEARCH USE ONLY. NOT FOR USE IN DIAGNOSTIC OR THERAPEUTIC PROCEDURES'.